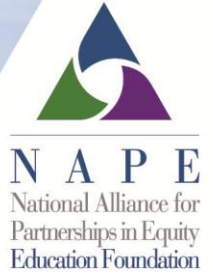


NORTH DAKOTA

Career Technical Education (CTE) Profile

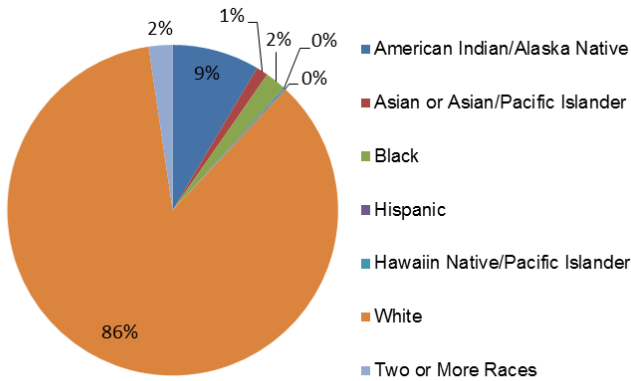


The North Dakota Department of Career and Technical Education administers Perkins IV implementation at the secondary and postsecondary level, as well as state-funded career and technical education programs.

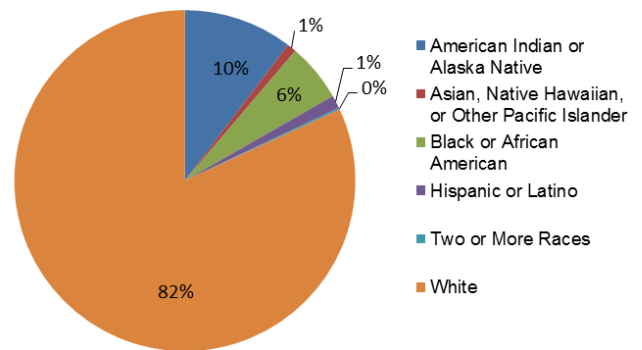
Enrollment

In FY 2012, 20,936 secondary and 9,848 postsecondary students participated in CTE. At the secondary level, 48% were female and 52% were male. At the postsecondary level, 48% were female and 52% were male.

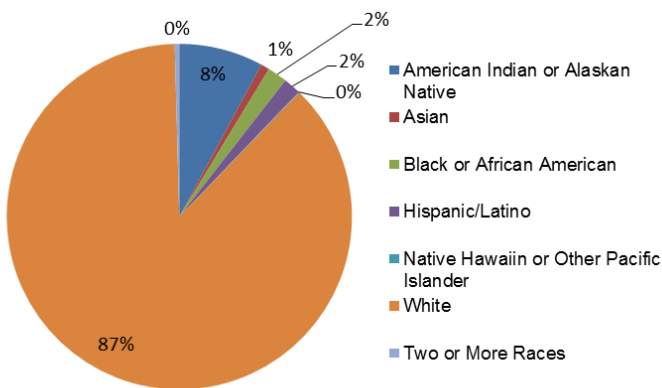
All Secondary Enrollment by Race, FY 2011



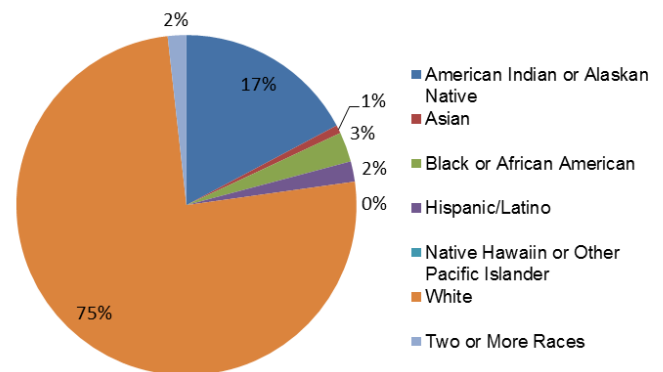
2-Year Postsecondary Enrollment by Race, Fall 2009



CTE Secondary Enrollment by Race, FY 2012



CTE Postsecondary Enrollment by Race, FY 2012



Perkins Funding

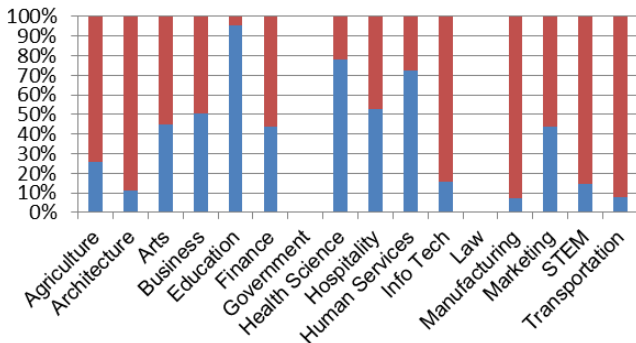
For FY 2014, North Dakota's Perkins state grant allocation is estimated to be \$4,214,921, which is the same as FY 2013 and FY 2012. Based on past years, of funds distributed to local recipients, 65% and 35% are expected to be distributed to secondary and postsecondary programs, respectively.

Performance Data for CTE Concentrators, FY 2012

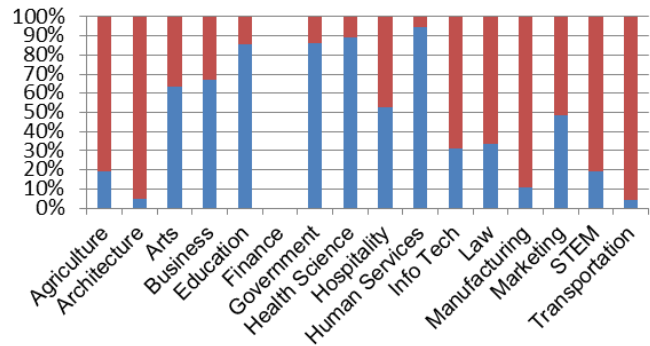
	Secondary		Postsecondary	
% passed the technical skill assessments aligned with industry standards	89%		84%	
% received an industry-recognized credential, certificate, or degree	95%		45%	
% placed or retained in postsecondary education, employment, military service, or advanced training	70%		66%	
	Male	Female	Male	Female
% of CTE students from underrepresented gender who participated in program nontraditional for that gender	24%	20%	11%	25%
% of CTE students from underrepresented gender who completed a program nontraditional for that gender	19%	15%	6%	16%

Career Cluster Enrollment by Gender

Secondary (blue=female, red=male)

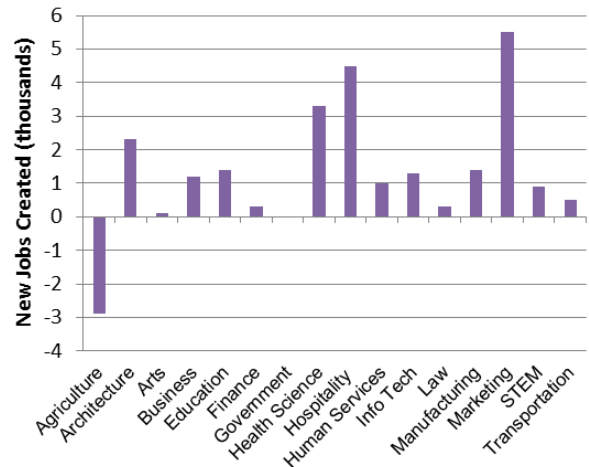


Postsecondary (blue=female, red=male)



Job Creation to 2018 by Career Cluster

The adjacent chart displays the expected number of jobs created (in thousands) in each of the 16 Career Clusters in North Dakota between 2008 and 2018, according to a report by Georgetown University.



Sources

ACTE, CTE State Profiles, <https://www.acteonline.org/stateprofiles/>
 Georgetown University, Career Clusters Report, <http://cew.georgetown.edu/clusters>
 NCES, Elementary/Secondary Education System, <http://nces.ed.gov/ccd/elsi/>, and College and Career Tables Library, Table 35d, <http://nces.ed.gov/datalab/tableslibrary/viewtable.aspx?tableid=8603>
 Perkins Collaborative Resource Network, Consolidated Annual Reports, <http://cte.ed.gov/accountability/reports.cfm>, and Perkins Allocations, <http://cte.ed.gov/perkinsimplementation/nrg.cfm>

State Contact

Debra Huber
 Administrator, Educ. Equity/Priv. Psec. Inst.
 ND State Board for Voc. & Tech. Ed.
 600 E. Boulevard Ave., Dept. 270, Bismarck, ND 58505
 Phone: (701) 328-2678; Email: dehuber@nd.gov