

# NEW HAMPSHIRE

## Career Technical Education (CTE) Profile



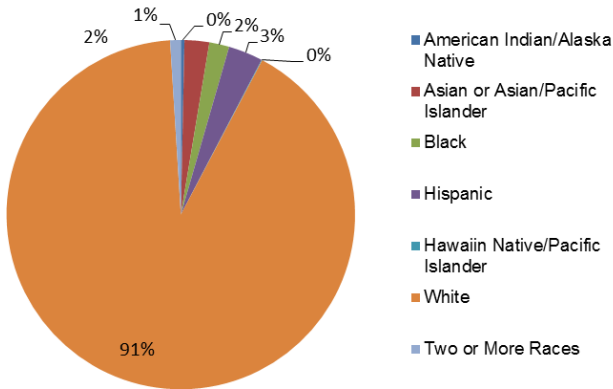
**NAPE**  
National Alliance for  
Partnerships in Equity  
Education Foundation

At the secondary level, CTE is delivered through comprehensive high schools, career and technical centers, and standalone career academies. At the postsecondary level, CTE is delivered through the Community College System of New Hampshire and the Thompson School, associated with the University of New Hampshire. The State Department of Education is the eligible agency for Perkins funding and administration.

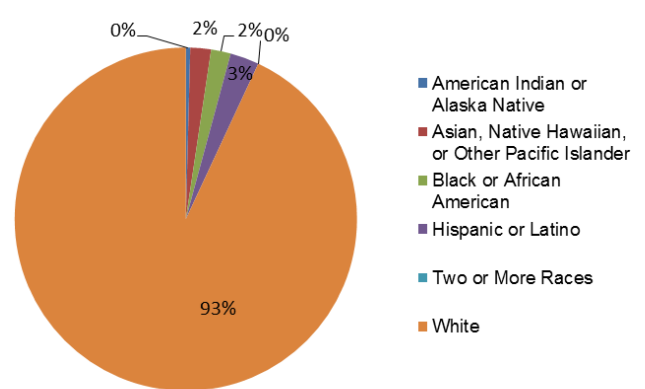
### Enrollment

In FY 2012, 10,742 secondary and 12,244 postsecondary students participated in CTE. At the secondary level, 43% were female and 57% were male. At the postsecondary level, 53% were female and 47% were male.

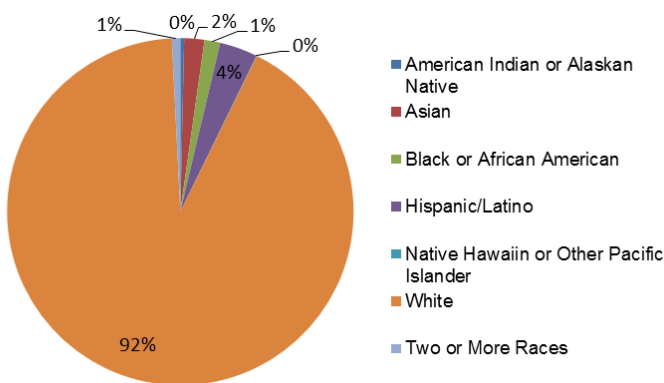
*All Secondary Enrollment by Race, FY 2011*



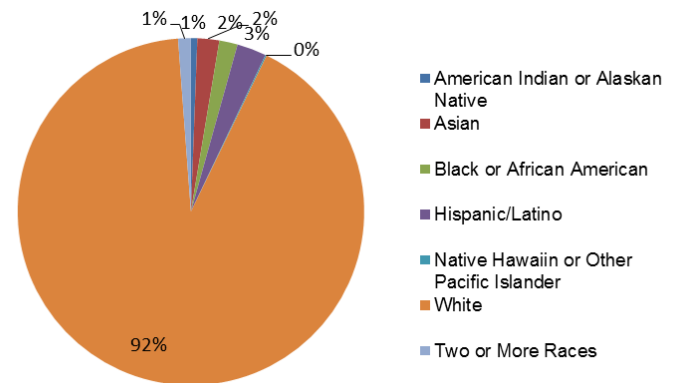
*2-Year Postsecondary Enrollment by Race, Fall 2009*



*CTE Secondary Enrollment by Race, FY 2012*



*CTE Postsecondary Enrollment by Race, FY 2012*



### Perkins Funding

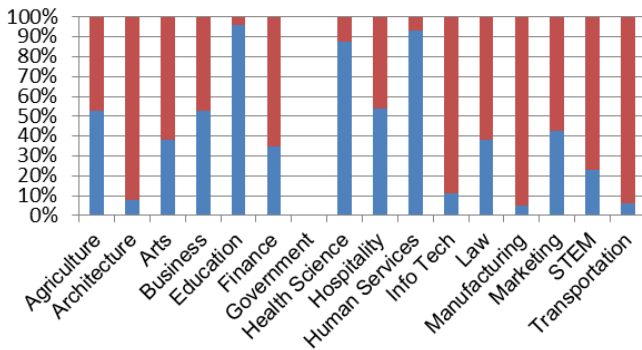
For FY 2014, New Hampshire's Perkins state grant allocation is estimated to be \$5,496,906, which is \$261,431 more than FY 2013 and \$26,718 less than FY 2012. Based on past years, of funds distributed to local recipients, 80% and 20% are expected to be distributed to secondary and postsecondary programs, respectively.

## Performance Data for CTE Concentrators, FY 2012

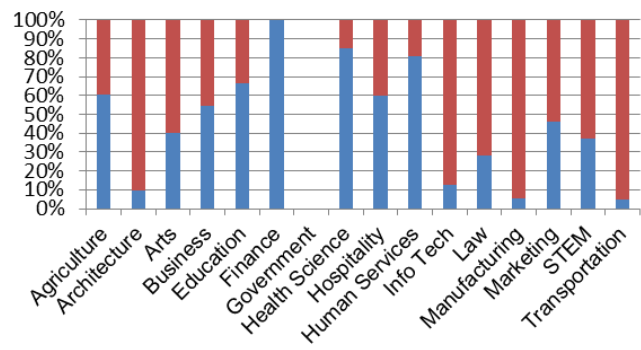
	Secondary		Postsecondary	
% passed the technical skill assessments aligned with industry standards	29%		92%	
% received an industry-recognized credential, certificate, or degree	95%		96%	
% placed or retained in postsecondary education, employment, military service, or advanced training	68%		69%	
	Male	Female	Male	Female
% of CTE students from underrepresented gender who participated in program nontraditional for that gender	19%	26%	11%	24%
% of CTE students from underrepresented gender who completed a program nontraditional for that gender	16%	24%	12%	21%

## Career Cluster Enrollment by Gender

Secondary (blue=female, red=male)

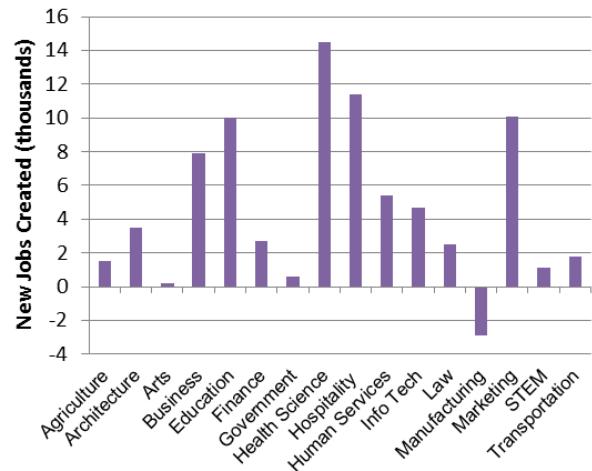


Postsecondary (blue=female, red=male)



## Job Creation to 2018 by Career Cluster

The adjacent chart displays the expected number of jobs created (in thousands) in each of the 16 Career Clusters in New Hampshire between 2008 and 2018, according to a report by Georgetown University.



## Sources

ACTE, CTE State Profiles, <https://www.acteonline.org/stateprofiles/>  
 Georgetown University, Career Clusters Report, <http://cew.georgetown.edu/clusters>  
 NCES, Elementary/Secondary Education System, <http://nces.ed.gov/ccd/elsi/>, and College and Career Tables Library, Table 35d, <http://nces.ed.gov/datalab/tableslibrary/viewtable.aspx?tableid=8603>  
 Perkins Collaborative Resource Network, Consolidated Annual Reports, <http://cte.ed.gov/accountability/reports.cfm>, and Perkins Allocations, <http://cte.ed.gov/perkinsimplementation/nrg.cfm>

## State Contact

Lisa Danley, CTE State Director  
 New Hampshire Department of Education  
 21 South Fruit St., Suite 20, Concord, NH 03301  
 Phone: (603) 271-3867; Email: [Lisa.danley@ed.state.nh.us](mailto:Lisa.danley@ed.state.nh.us)