

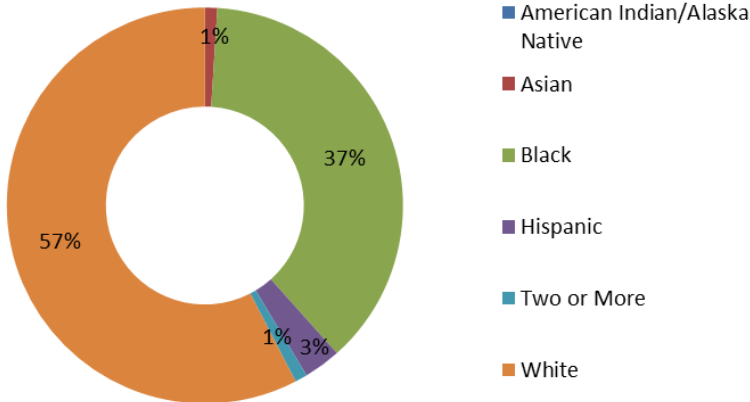
# MISSISSIPPI

## Career Technical Education (CTE) Profile



**NAPE**  
National Alliance for  
Partnerships in Equity  
Education Foundation

### General Population (2014)<sup>1</sup>



### Fast Facts

Mississippi is expected to become a majority-minority state in 2043.<sup>2</sup>

44% of working families are low income.<sup>3</sup>

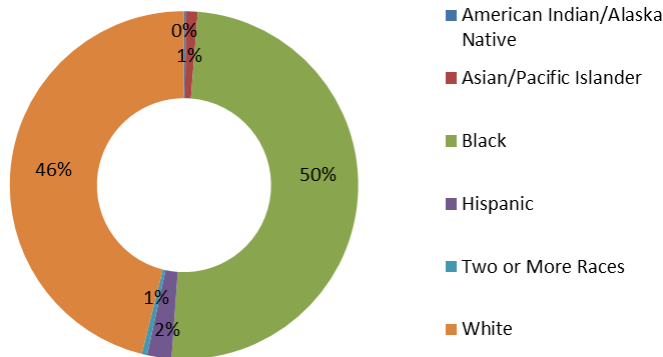
61% of minority working families are low income.<sup>3</sup>

49% of low-income working families are headed by a woman.<sup>4</sup>

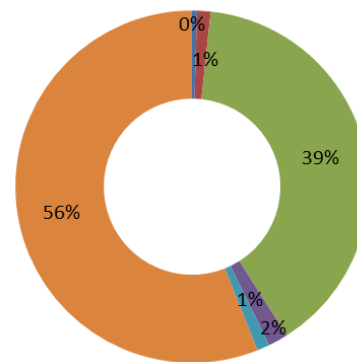
Median Hourly Wages <sup>5</sup>	Male	Female
White	\$20	\$16
Black	\$13	\$12
Latino	\$13	\$12
Asian	\$21	\$13
Native American	N/A	N/A

### General Student Population

Secondary Enrollment, FY 2014<sup>6</sup>



4-Year Postsecondary Enrollment, Fall 2013<sup>7</sup>



### Career and Technical Education

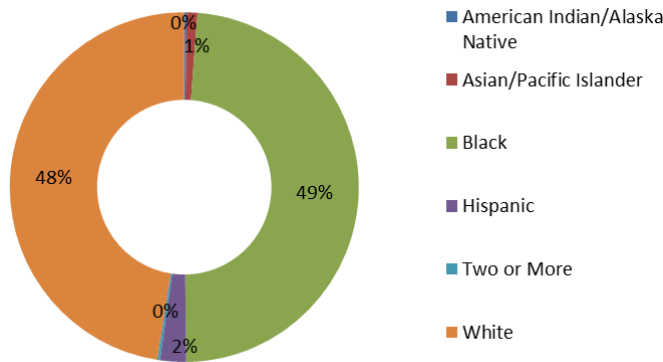
Secondary CTE is delivered through comprehensive high schools and area career centers, which provide supplemental career training to students within a district. Postsecondary CTE is delivered through community and junior colleges.<sup>8</sup>

#### State CTE Contact

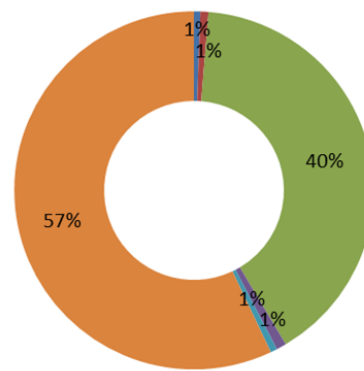
Jean Massey, Associate State Superintendent of Career and Workforce Development, MS Department of Education, 359 N. West St., P.O. Box 771, Jackson, MS 39205, (601) 359-3986, jmassey@mde.k12.ms.us

In FY 2014, 11% of secondary and 59% of postsecondary students enrolled in CTE were economically disadvantaged.<sup>9</sup>

Secondary CTE Enrollment, FY 2014<sup>9</sup>



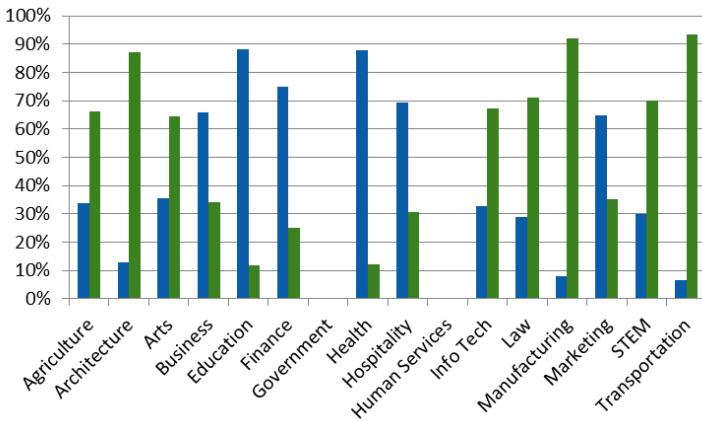
Postsecondary CTE Enrollment, FY 2014<sup>9</sup>



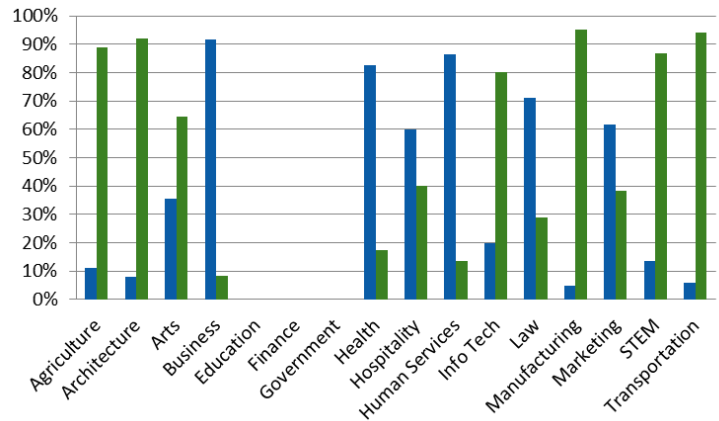
## Career Clusters

Seven of the 16 career clusters in CTE lead to many high-skill, high-wage, and high-demand STEM related careers. These include: Agriculture, Architecture, Health, Information Technology, Manufacturing, STEM, and Transportation, Distribution, and Logistics. These career clusters contain programs that prepare students for nontraditional careers.

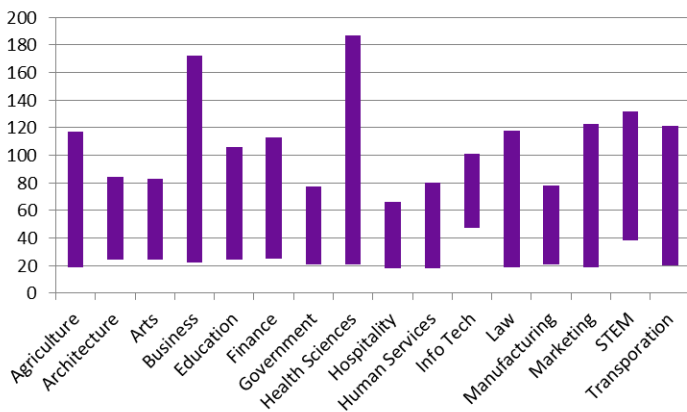
Secondary Enrollment, FY 2014<sup>9</sup>  
(blue = female, green = male)



Postsecondary Enrollment, FY 2014<sup>9</sup>  
(blue = female, green = male)



Median Salary Range (national, \$000)<sup>10</sup>



## Fact Sheet Sources

- <http://www.census.gov/quickfacts/table/RHI225214/01>
- <https://cdn.americanprogress.org/wp-content/uploads/2015/02/SOC-report1.pdf>
- <http://www.workingpoorfamilies.org/indicators/>
- [http://www.workingpoorfamilies.org/wp-content/uploads/2014/02/WPFP\\_Low-Income-Working-Mothers-Report\\_021214.pdf](http://www.workingpoorfamilies.org/wp-content/uploads/2014/02/WPFP_Low-Income-Working-Mothers-Report_021214.pdf)
- <http://nationalequityatlas.org/data-summaries>
- <http://nces.ed.gov/ccd/elsi/tableGenerator.aspx>
- [http://nces.ed.gov/programs/digest/d14/tables/dt14\\_306.60.asp](http://nces.ed.gov/programs/digest/d14/tables/dt14_306.60.asp)
- [https://www.acteonline.org/stateprofiles/;](https://www.acteonline.org/stateprofiles/)
- <https://perkins.ed.gov/pims/DataExplorer> (race not available for clusters)
- <http://www.bls.gov/careeroutlook/2015/article/career-clusters.htm>