

# INDIANA

## Career Technical Education (CTE) Profile

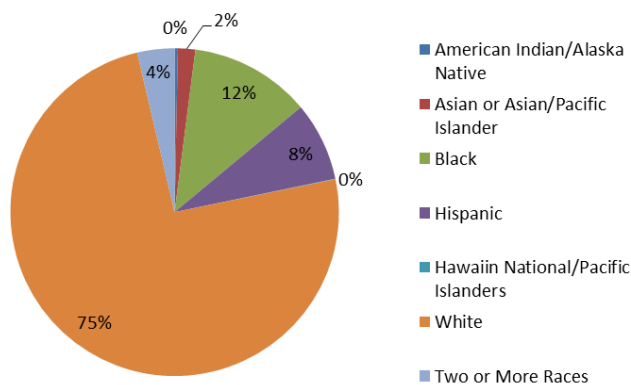


**NAPE**  
National Alliance for  
Partnerships in Equity  
Education Foundation

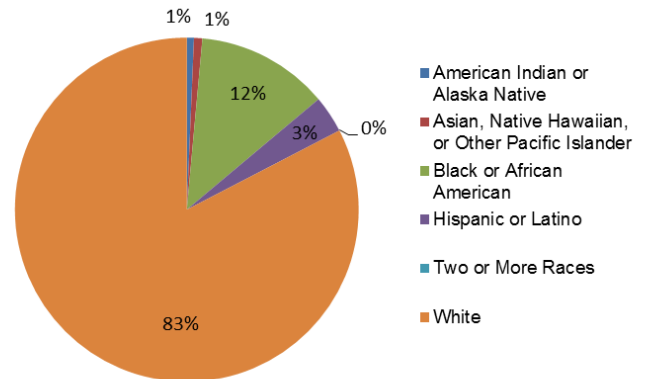
Secondary CTE is delivered through comprehensive high schools and area career centers. Postsecondary CTE is delivered through the statewide community college system Ivy Tech, which has 23 campuses, Vincennes University, and 4-year universities that offer associate of science degree programs. The Indiana Department of Workforce Development is the sole state agency responsible for the receipt and administration of Perkins funds.

### Enrollment (most recent data available by state is reported)

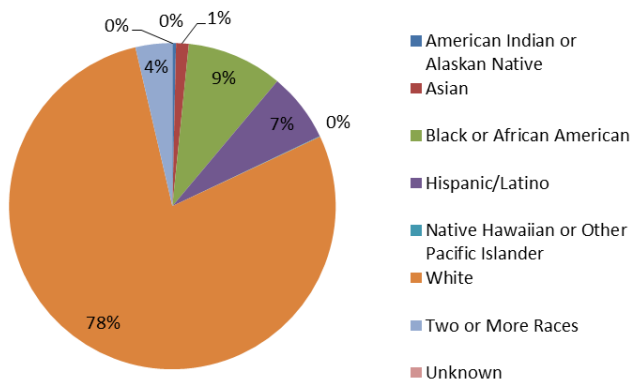
All Secondary Enrollment by Race, FY 2012



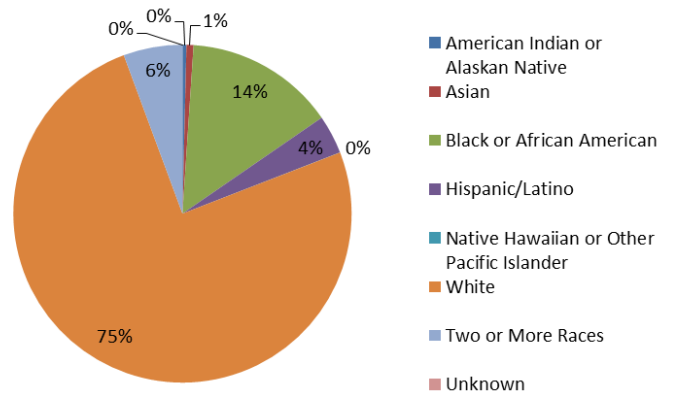
2-Year Postsecondary Enrollment by Race, Fall 2009



CTE Secondary Enrollment by Race, FY 2013



CTE Postsecondary Enrollment by Race, FY 2013



In FY 2013, 146,779 secondary and 21,926 postsecondary students participated in CTE. At the secondary level, 49% were female and 51% were male. At the postsecondary level, 55% were female and 45% were male.

### Perkins Funding

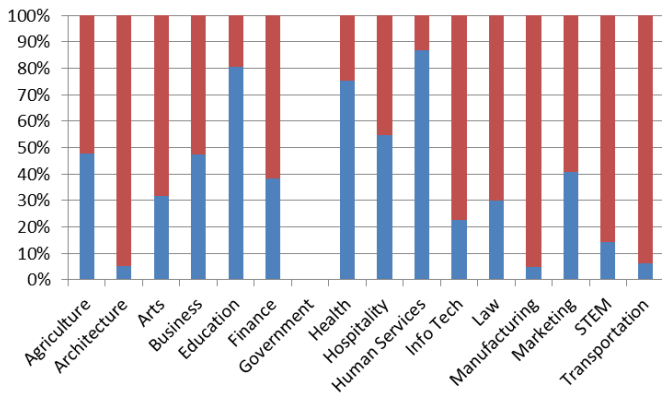
For FY 2014, Indiana's Perkins state grant allocation was \$24,828,968, which was \$1,141,049 more than FY 2013 and \$636,185 less than FY 2012. Of funds distributed to local recipients, 64% and 36% have traditionally been distributed to secondary and postsecondary programs, respectively.

## Performance Data for CTE Concentrators, FY 2013

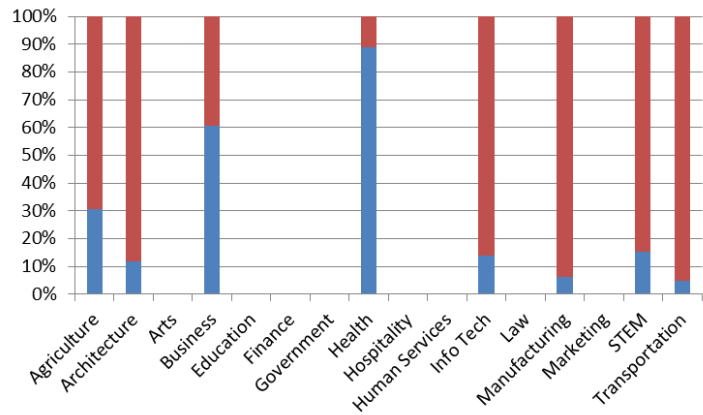
	Secondary		Postsecondary	
% passed the technical skill assessments aligned with industry standards	89%		93%	
% received an industry-recognized credential, certificate, or degree	95%		28%	
% placed or retained in postsecondary education, employment, military service, or advanced training	94%		99%	
	Male	Female	Male	Female
% of CTE students from underrepresented gender who participated in program nontraditional for that gender	15%	29%	20%	29%
% of CTE students from underrepresented gender who completed a program nontraditional for that gender	7%	18%	9%	38%

## Career Cluster Enrollment by Gender, FY 2013

Secondary (blue=female, red=male)



Postsecondary (blue=female, red=male)

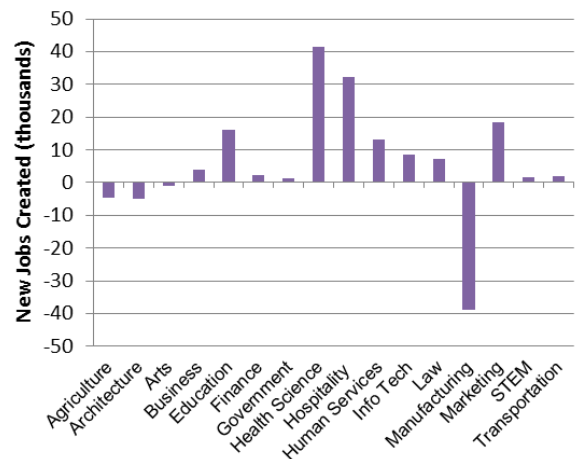


## Job Creation to 2018 by Career Cluster

The adjacent chart displays the expected number of jobs created (in thousands) in each of the 16 Career Clusters in Indiana between 2008 and 2018, according to a report by Georgetown University.

### Sources

ACTE, CTE State Profiles, <https://www.acteonline.org/stateprofiles/>  
 Georgetown University, Career Clusters Report, <http://cew.georgetown.edu/clusters>  
 NCES, Elementary/Secondary Education System, <http://nces.ed.gov/ccd/elsi/>, and College and Career Tables Library, Table 35d, <http://nces.ed.gov/datalab/tablelibrary/viewtable.aspx?tableid=8603>  
 Perkins Collaborative Resource Network, Consolidated Annual Reports, <http://cte.ed.gov/accountability/reports.cfm>, and Perkins Allocations, <http://cte.ed.gov/perkinsimplementation/nrg.cfm>



## State Contact

Lloyd Garrison, CTE Special Populations Specialist  
 Indiana Department of Education  
 151 West Ohio Street, Indianapolis, IN 46204  
 Phone: (317) 232-6989; Email: [lgarrison@doe.in.gov](mailto:lgarrison@doe.in.gov)