

IDAHO

Career Technical Education (CTE) Profile



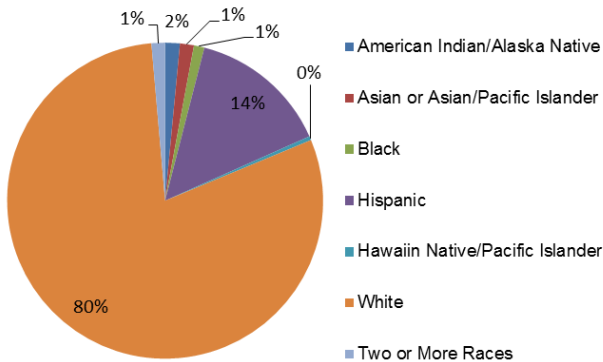
NAPE
National Alliance for
Partnerships in Equity
Education Foundation

In Idaho, CTE is referred to as “professional-technical education” (PTE). Secondary PTE programs and services are provided through comprehensive high schools, professional-technical schools, and cooperative programs with technical colleges. Postsecondary and adult PTE programs and services are delivered through a statewide system of six technical colleges.

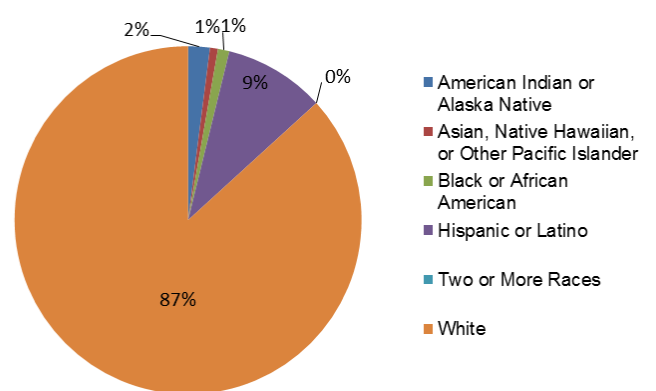
Enrollment

In FY 2012, 85,490 secondary and 8,830 postsecondary students participated in CTE. At the secondary level, 46% were female and 54% were male. At the postsecondary level, 50% were female and 50% were male.

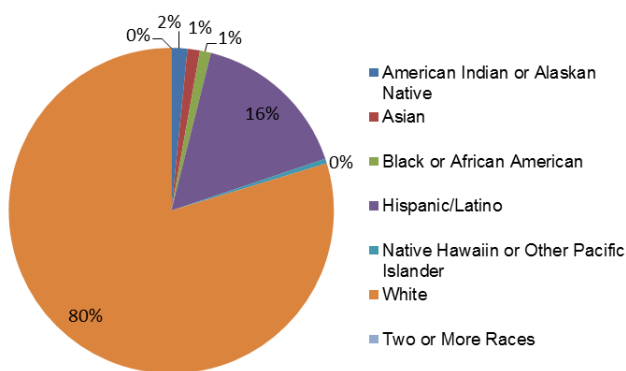
All Secondary Enrollment by Race, FY 2011



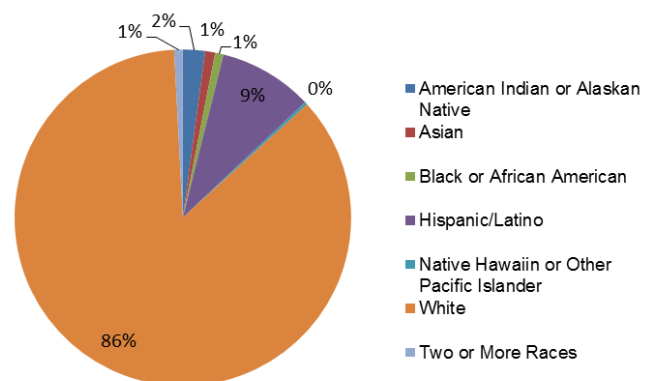
2-Year Postsecondary Enrollment by Race, Fall 2009



CTE Secondary Enrollment by Race, FY 2012



CTE Postsecondary Enrollment by Race, FY 2012



Perkins Funding

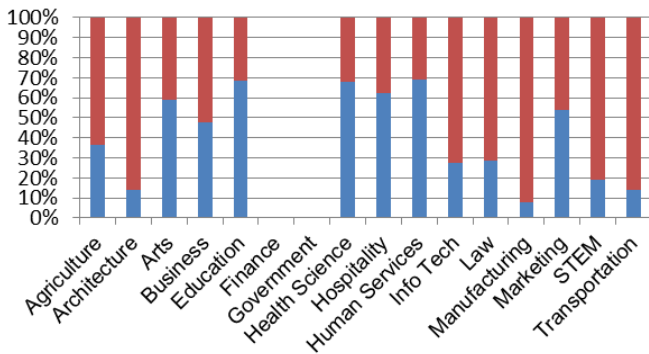
For FY 2014, Idaho’s Perkins state grant allocation is estimated to be \$6,376,981, which is \$377,460 more than FY 2013 and \$17,918 less than FY 2012. Based on past years, of funds distributed to local recipients, 65% and 35% are expected to be distributed to secondary and postsecondary programs, respectively.

Performance Data for CTE Concentrators, FY 2012

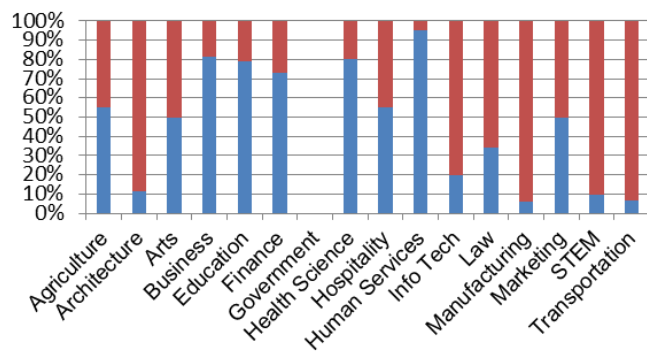
	Secondary		Postsecondary	
% passed the technical skill assessments aligned with industry standards	74%		90%	
% received an industry-recognized credential, certificate, or degree	99%		68%	
% placed or retained in postsecondary education, employment, military service, or advanced training	94%		90%	
	Male	Female	Male	Female
% of CTE students from underrepresented gender who participated in program nontraditional for that gender	47%	31%	15%	17%
% of CTE students from underrepresented gender who completed a program nontraditional for that gender	35%	30%	14%	17%

Career Cluster Enrollment by Gender

Secondary (blue=female, red=male)



Postsecondary (blue=female, red=male)



Job Creation to 2018 by Career Cluster

The adjacent chart displays the expected number of jobs created (in thousands) in each of the 16 Career Clusters in Idaho between 2008 and 2018, according to a report by Georgetown University.

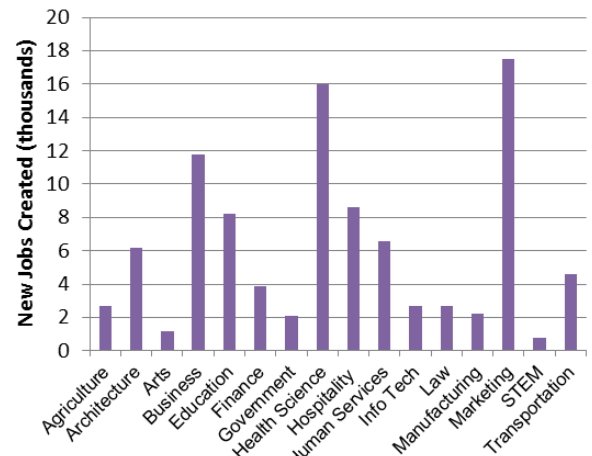
Sources

ACTE, CTE State Profiles, [https://www.acteonline.org/stateprofiles/Georgetown University, Career Clusters Report](https://www.acteonline.org/stateprofiles/Georgetown%20University,%20Career%20Clusters%20Report), <http://cew.georgetown.edu/clusters>

NCES, Elementary/Secondary Education System, <http://nces.ed.gov/ccd/elsi/>, and College and Career Tables Library, Table 35d,

<http://nces.ed.gov/datalab/tableslibrary/viewtable.aspx?tableid=8603>

Perkins Collaborative Resource Network, Consolidated Annual Reports, <http://cte.ed.gov/accountability/reports.cfm>, and Perkins Allocations, <http://cte.ed.gov/perkinsimplementation/nrg.cfm>



State Contact

Adrian San Miguel, Career Guidance and Transition Coordinator
 Idaho Division of Professional-Tech. Ed.
 650 W. State St., P.O. Box 83720, Room 324
 Boise, ID 83720-0095
 Phone: (208) 334-5542; Email: adrian.sanmiguel@pte.idaho.gov