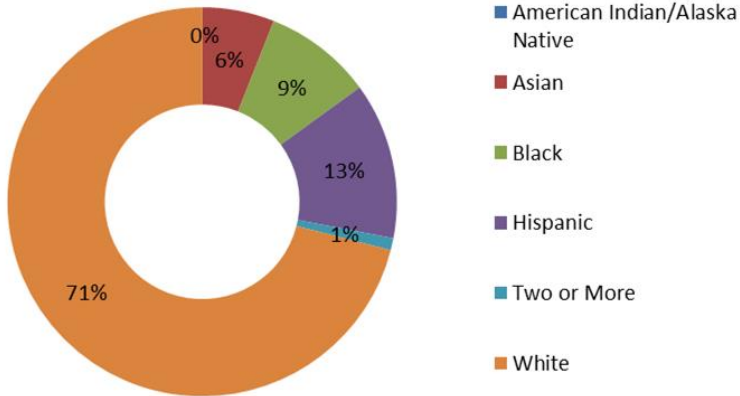


# CONNECTICUT

## Career Technical Education (CTE) Profile



### General Population (2014)<sup>1</sup>



### Fast Facts

Connecticut is expected to become a majority-minority state in 2047.<sup>2</sup>

20% of working families are low income.<sup>3</sup>

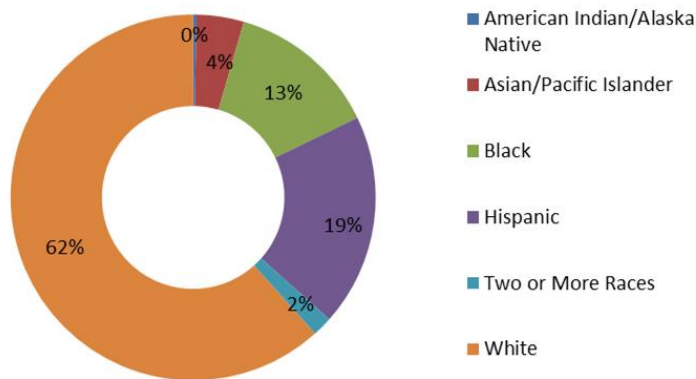
36% of minority working families are low income.<sup>3</sup>

50% of low-income working families are headed by a woman.<sup>4</sup>

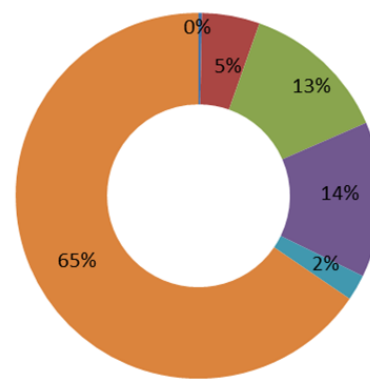
Median Hourly Wages <sup>5</sup>	Male	Female
White	\$30	\$24
Black	\$21	\$19
Latino	\$17	\$15
Asian	\$29	\$23
Native American	N/A	N/A

### General Student Population

Secondary Enrollment, FY 2014<sup>6</sup>



4-Year Postsecondary Enrollment, Fall 2013<sup>7</sup>



### Career and Technical Education

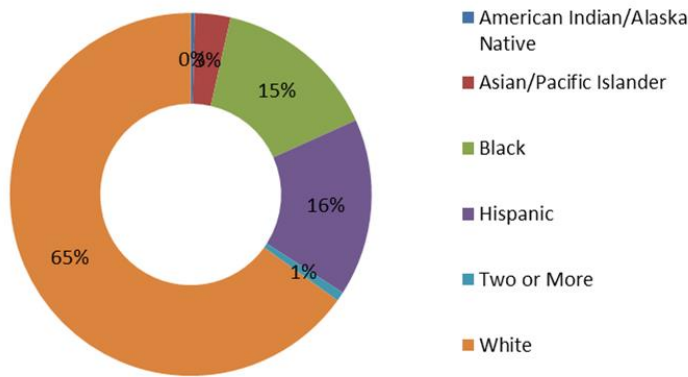
At the secondary level, Connecticut delivers CTE through comprehensive high schools and through the Connecticut Technical High School System (CTHSS). The state also has 19 Agriculture Science and Technology Education Centers. At the postsecondary level, CTE is delivered through 12 community colleges. The State Department of Education is the fiscal agent for Perkins funds.<sup>8</sup>

#### State CTE Contacts

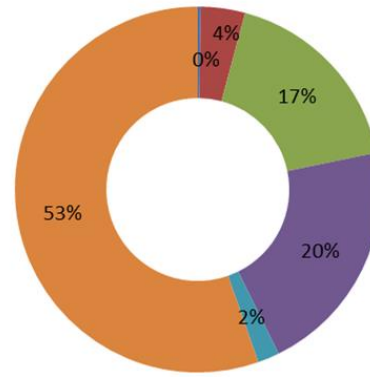
June Sanford, State Director, CTE, Connecticut Department of Education, 165 Capitol Ave., Rm. 363  
Hartford, CT 06106, (860) 713-6765, June.Sanford@ct.gov

In FY 2014, 26% of secondary and 36% of postsecondary students enrolled in CTE were economically disadvantaged.<sup>9</sup>

Secondary CTE Enrollment, FY 2014<sup>9</sup>



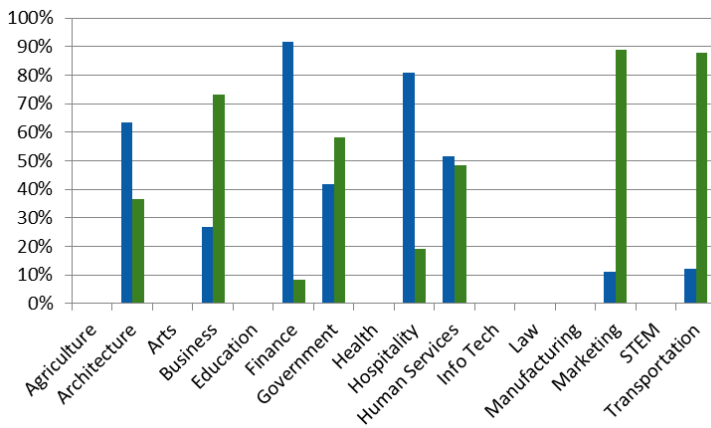
Postsecondary CTE Enrollment, FY 2014<sup>9</sup>



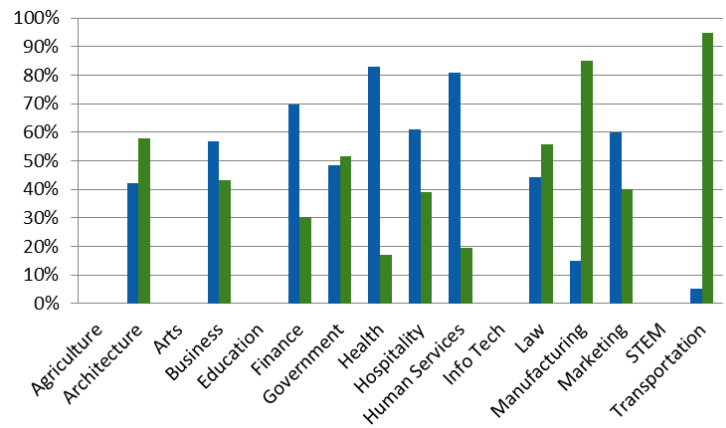
## Career Clusters

Seven of the 16 career clusters in CTE lead to many high-skill, high-wage, and high-demand STEM related careers. These include: Agriculture, Architecture, Health, Information Technology, Manufacturing, STEM, and Transportation, Distribution, and Logistics. These career clusters contain programs that prepare students for nontraditional careers.

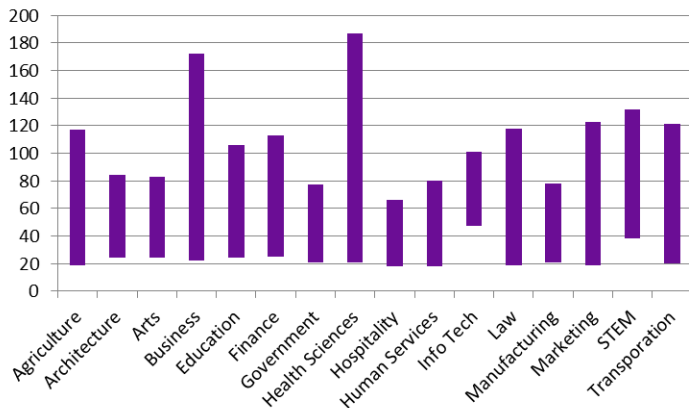
Secondary Enrollment, FY 2014<sup>9</sup>  
(blue = female, green = male)



Postsecondary Enrollment, FY 2014<sup>9</sup>  
(blue = female, green = male)



Median Salary Range (national, \$000)<sup>10</sup>



## Fact Sheet Sources

- <http://www.census.gov/quickfacts/table/RHI225214/01>
- <https://cdn.americanprogress.org/wp-content/uploads/2015/02/SOC-report1.pdf>
- <http://www.workingpoorfamilies.org/indicators/>
- [http://www.workingpoorfamilies.org/wp-content/uploads/2014/02/WFPF\\_Low-Income-Working-Mothers-Report\\_021214.pdf](http://www.workingpoorfamilies.org/wp-content/uploads/2014/02/WFPF_Low-Income-Working-Mothers-Report_021214.pdf)
- <http://nationalequityatlas.org/data-summaries>
- <http://nces.ed.gov/ccd/elsi/tableGenerator.aspx>
- [http://nces.ed.gov/programs/digest/d14/tables/dt14\\_306.60.asp](http://nces.ed.gov/programs/digest/d14/tables/dt14_306.60.asp)
- [https://www.acteonline.org/stateprofiles/;](https://www.acteonline.org/stateprofiles/)
- <https://perkins.ed.gov/pims/DataExplorer> (race not available for clusters)
- <http://www.bls.gov/careeroutlook/2015/article/career-clusters.htm>