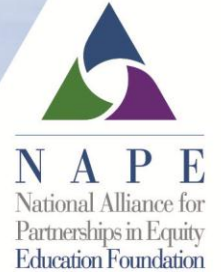


SOUTH DAKOTA

Career Technical Education (CTE) Profile

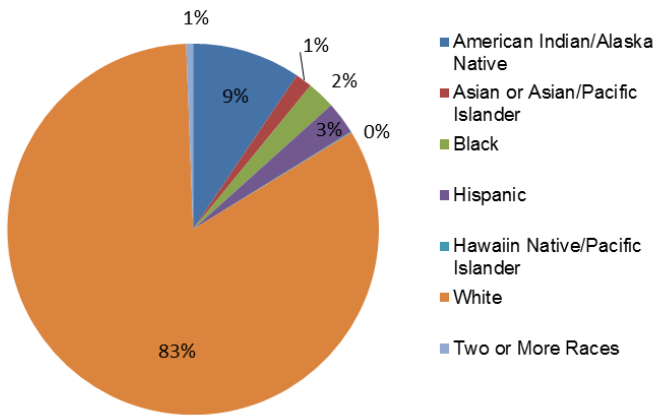


At the secondary level, CTE is delivered through a combination of comprehensive high schools, multi-district CTE centers, tribal schools, and alternative state schools. At the postsecondary level, CTE is delivered through the state's technical institutes and 4-year public universities.

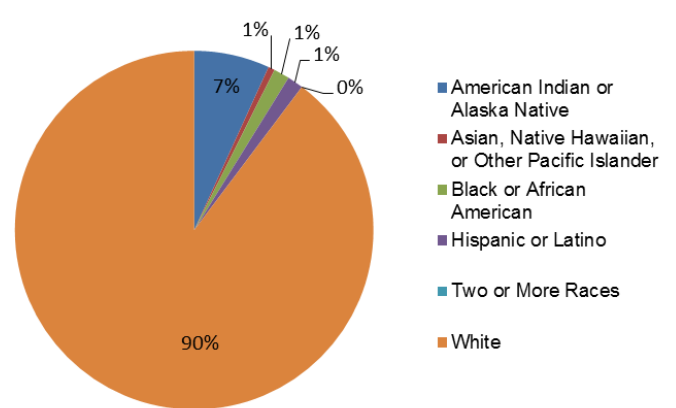
Enrollment

In FY 2012, 35,806 secondary and 5,515 postsecondary students participated in CTE. At the secondary level, 43% were female and 57% were male. At the postsecondary level, 45% were female and 55% were male.

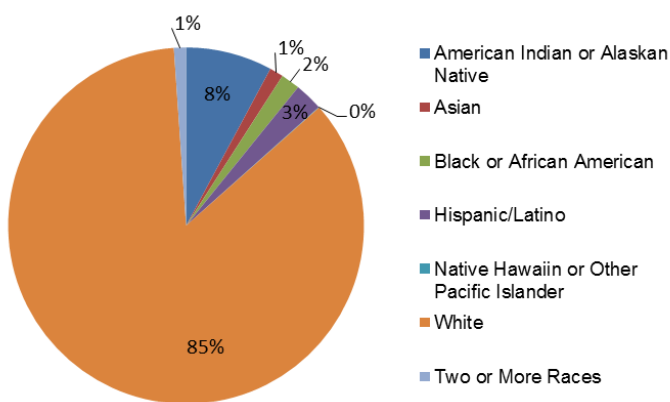
All Secondary Enrollment by Race, FY 2011



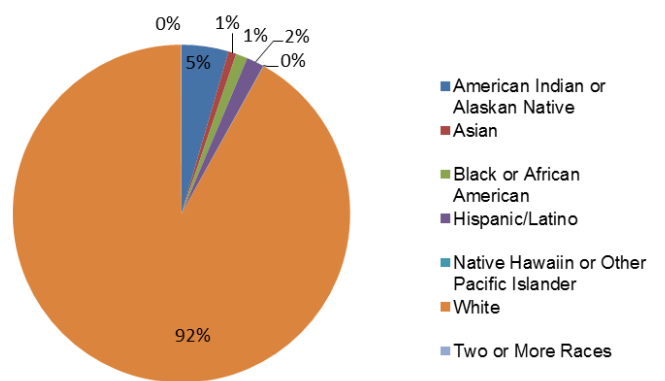
2-Year Postsecondary Enrollment by Race, Fall 2009



CTE Secondary Enrollment by Race, FY 2012



CTE Postsecondary Enrollment by Race, FY 2012



Perkins Funding

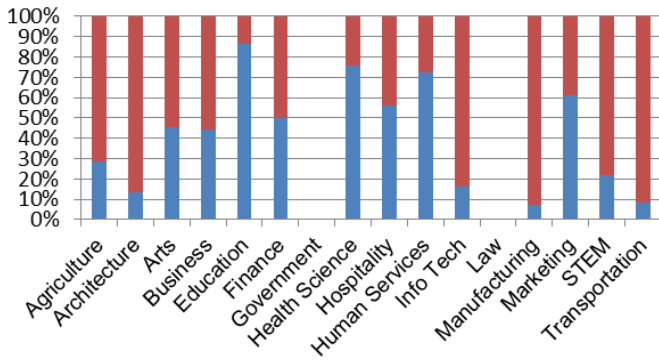
For FY 2014, South Dakota's Perkins state grant allocation is estimated to be \$4,214,921, which is the same as FY 2013 and FY 2012.

Performance Data for CTE Concentrators, FY 2012

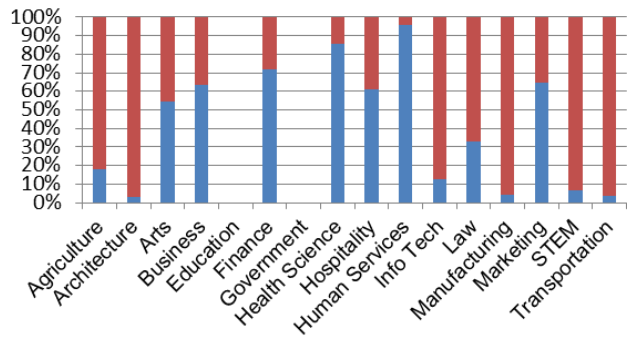
	Secondary		Postsecondary	
% passed the technical skill assessments aligned with industry standards	97%		88%	
% received an industry-recognized credential, certificate, or degree	97%		64%	
% placed or retained in postsecondary education, employment, military service, or advanced training	96%		84%	
	Male	Female	Male	Female
% of CTE students from underrepresented gender who participated in program nontraditional for that gender	54%	47%	13%	8%
% of CTE students from underrepresented gender who completed a program nontraditional for that gender	24%	19%	16%	7%

Career Cluster Enrollment by Gender

Secondary (blue=female, red=male)

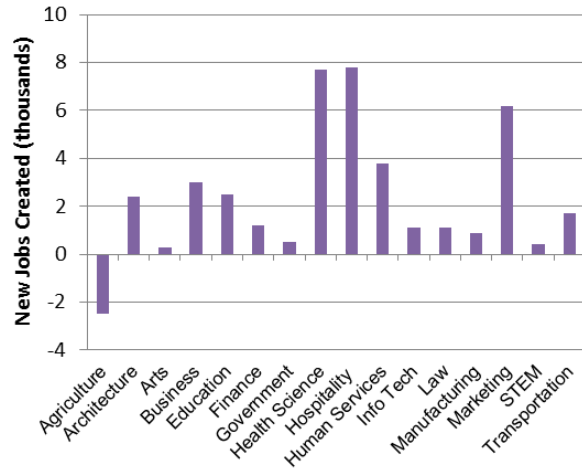


Postsecondary (blue=female, red=male)



Job Creation to 2018 by Career Cluster

The adjacent chart displays the expected number of jobs created (in thousands) in each of the 16 Career Clusters in South Dakota between 2008 and 2018, according to a report by Georgetown University.



Sources

ACTE, CTE State Profiles,

<https://www.acteonline.org/stateprofiles/>

Georgetown University, Career Clusters Report,

<http://cew.georgetown.edu/clusters>

NCES, Elementary/Secondary Education System,

<http://nces.ed.gov/ccd/elsi/>, and College and Career Tables Library, Table 35d,

<http://nces.ed.gov/datalab/tableslibrary/viewtable.aspx?tableid=8603>

Perkins Collaborative Resource Network, Consolidated Annual Reports, <http://cte.ed.gov/accountability/reports.cfm>, and

Perkins Allocations, <http://cte.ed.gov/perkinsimplementation/nrg.cfm>

State Contact

Erin Larsen

Education Program Specialist

South Dakota Department of Education

800 Governors Dr., Pierre, SD 57501-2294

Phone: (605) 773-2533; Email: Erin.Larsen@state.sd.us