

NEW MEXICO

Career Technical Education (CTE) Profile

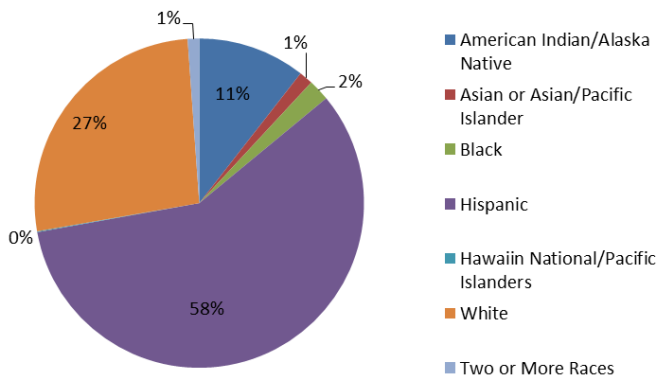


NAPEE
National Alliance for
Partnerships in Equity
Education Foundation

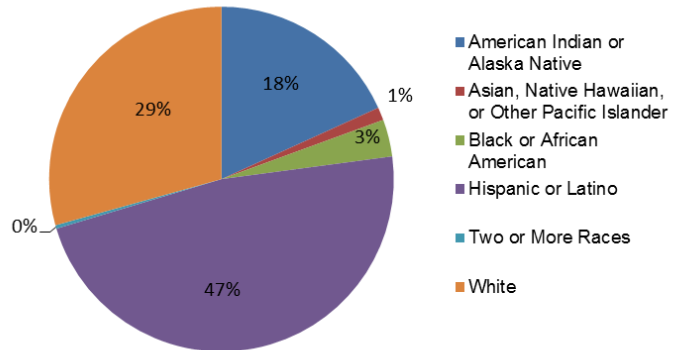
At the secondary level, CTE is delivered through comprehensive high schools, district vocational high schools, and career academies. At the postsecondary level, CTE is delivered through community colleges and 4-year institutions that offer associate's degrees. The New Mexico Public Education Department is the eligible agency for Perkins funding.

Enrollment (most recent data available by state is reported)

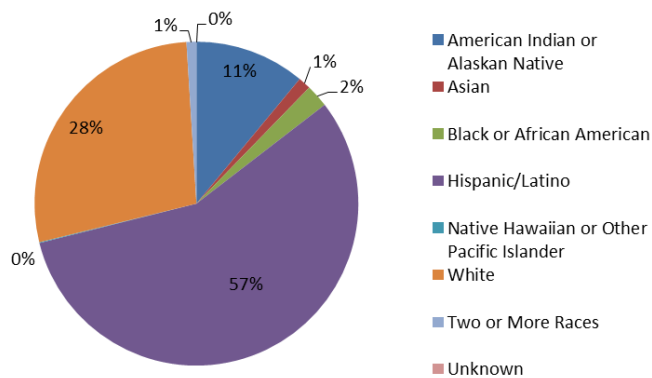
All Secondary Enrollment by Race, FY 2012



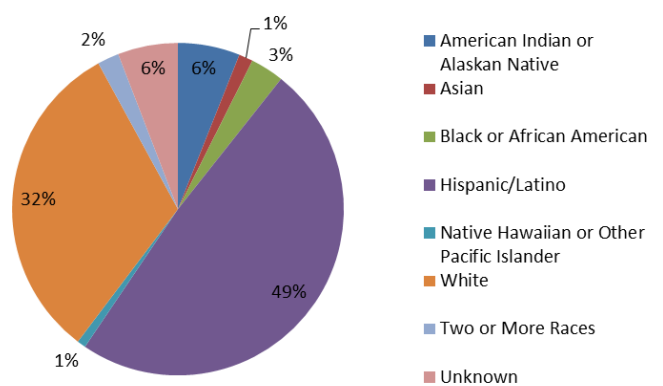
2-Year Postsecondary Enrollment by Race, Fall 2009



CTE Secondary Enrollment by Race, FY 2013



CTE Postsecondary Enrollment by Race, FY 2013



In FY 2013, 145,590 secondary and 41,029 postsecondary students participated in CTE. At the secondary level, 48% were female and 52% were male. At the postsecondary level, 49% were female and 51% were male.

Perkins Funding

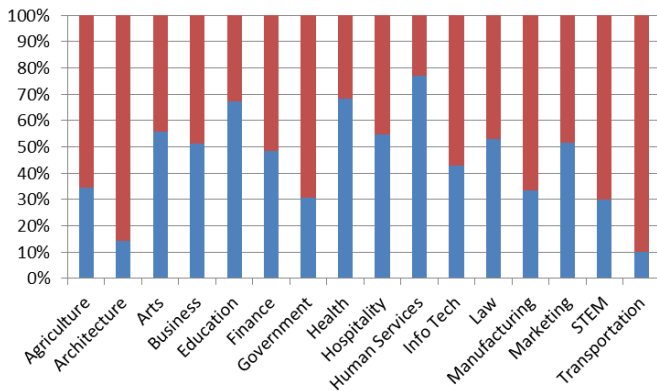
For FY 2014, New Mexico's Perkins state grant allocation was \$8,024,064 which was \$6,642 more than FY 2013 and \$173,406 less than FY 2012. Of funds distributed to local recipients, 50% and 50% have traditionally been distributed to secondary and postsecondary programs, respectively.

Performance Data for CTE Concentrators, FY 2013

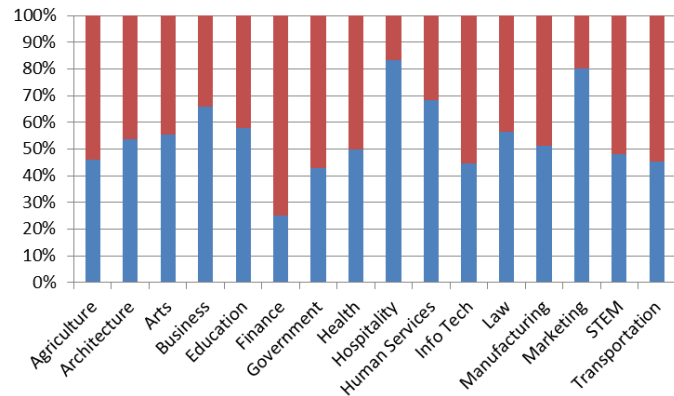
	Secondary		Postsecondary	
% passed the technical skill assessments aligned with industry standards	85%		98%	
% received an industry-recognized credential, certificate, or degree	89%		39%	
% placed or retained in postsecondary education, employment, military service, or advanced training	46%		72%	
	Male	Female	Male	Female
% of CTE students from underrepresented gender who participated in program nontraditional for that gender	32%	34%	29%	38%
% of CTE students from underrepresented gender who completed a program nontraditional for that gender	33%	35%	20%	24%

Career Cluster Enrollment by Gender, FY 2013

Secondary (blue=female, red=male)



Postsecondary (blue=female, red=male)



Job Creation to 2018 by Career Cluster

The adjacent chart displays the expected number of jobs created (in thousands) in each of the 16 Career Clusters in New Mexico between 2008 and 2018, according to a report by Georgetown University.

Sources

ACTE, CTE State Profiles,

<https://www.acteonline.org/stateprofiles/>

Georgetown University, Career Clusters Report,

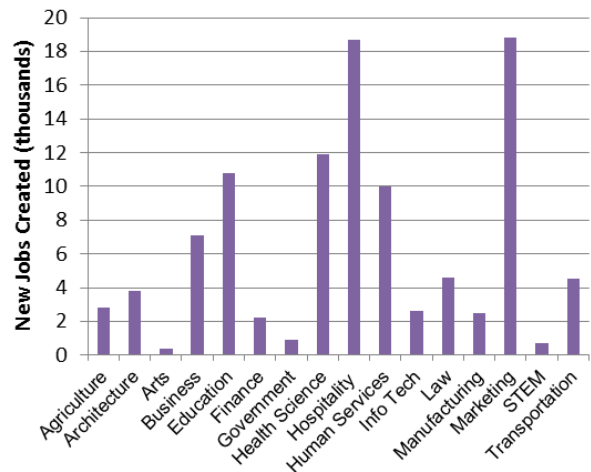
<http://cew.georgetown.edu/clusters>

NCES, Elementary/Secondary Education System,

<http://nces.ed.gov/ccd/elsi/>, and College and Career Tables Library, Table 35d,

<http://nces.ed.gov/datalab/tableslibrary/viewtable.aspx?tableid=8603>

Perkins Collaborative Resource Network, Consolidated Annual Reports, <http://cte.ed.gov/accountability/reports.cfm>, and Perkins Allocations, <http://cte.ed.gov/perkinsimplementation/nrg.cfm>



State Contact

Eric Spencer

Director, College and Career Readiness Bureau

New Mexico Dept. of Education

300 Don Gaspar, Santa Fe, NM 87501

Phone: (505) 827-6420; Email: eric.spencer@state.nm.us