

MONTANA

Career Technical Education (CTE) Profile

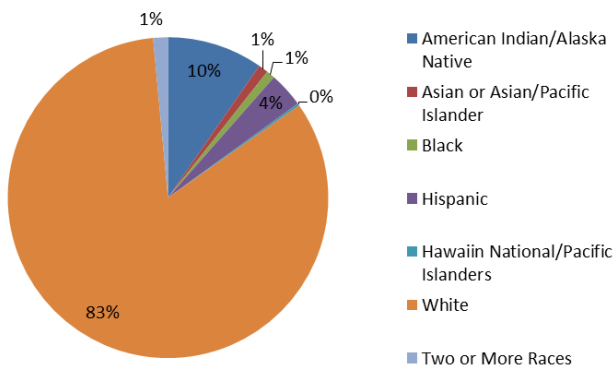


NAPE
National Alliance for
Partnerships in Equity
Education Foundation

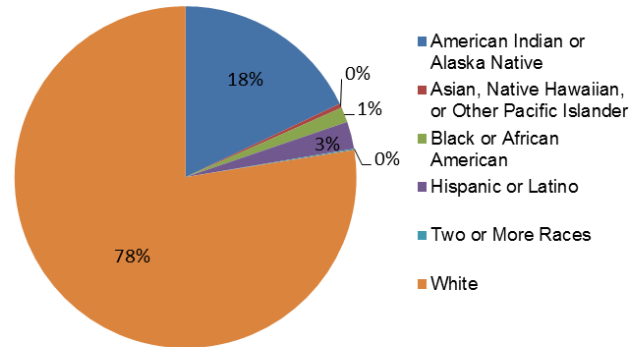
Secondary CTE is delivered through comprehensive high schools. Postsecondary CTE is delivered through colleges of technology, which serve as the 2-year college/career training arm of several universities, community colleges, tribal colleges, and 4-year institutions that offer associate degrees and certificates. The Office of the Commissioner of Higher Education has the overall responsibility for administration of Perkins funds.

Enrollment (most recent data available by state is reported)

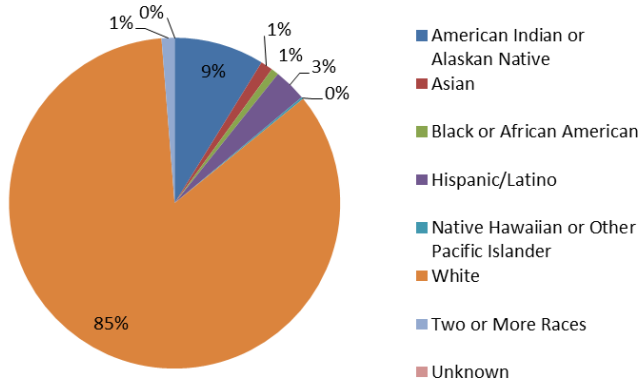
All Secondary Enrollment by Race, FY 2012



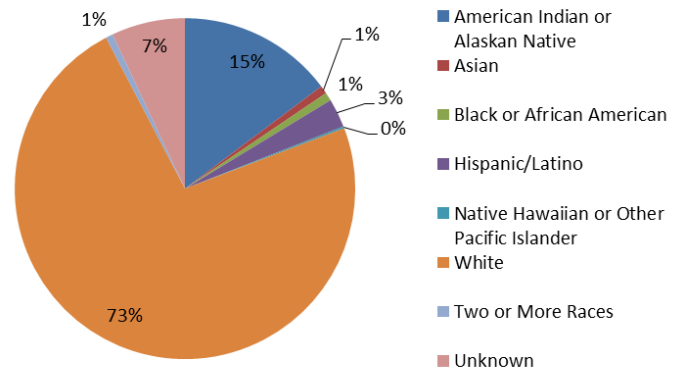
2-Year Postsecondary Enrollment by Race, Fall 2009



CTE Secondary Enrollment by Race, FY 2013



CTE Postsecondary Enrollment by Race, FY 2013



In FY 2013, 10,341 secondary and 18,185 postsecondary students participated in CTE. At the secondary level, 48% were female and 52% were male. At the postsecondary level, 59% were female and 41% were male.

Perkins Funding

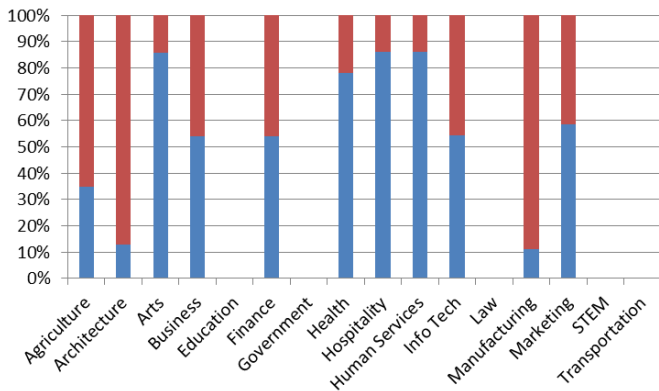
For FY 2014, Montana's Perkins state grant allocation was \$5,177,072, which was \$237,765 more than FY 2013 and \$25,512 less than FY 2012. Of funds distributed to local recipients, 65% and 35% have traditionally been distributed to secondary and postsecondary programs, respectively.

Performance Data for CTE Concentrators, FY 2013

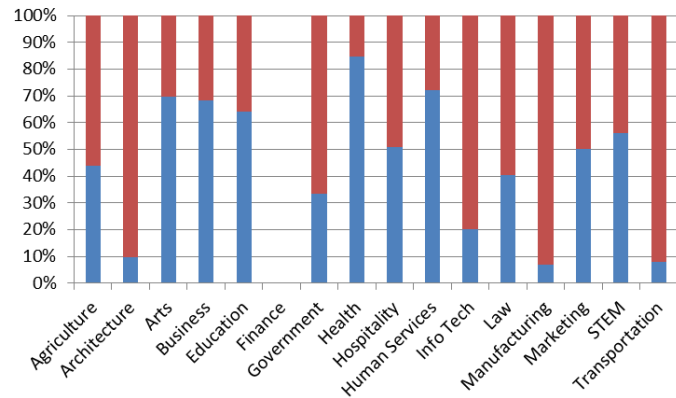
	Secondary		Postsecondary	
% passed the technical skill assessments aligned with industry standards	90%		93%	
% received an industry-recognized credential, certificate, or degree	97%		57%	
% placed or retained in postsecondary education, employment, military service, or advanced training	87%		80%	
	Male	Female	Male	Female
% of CTE students from underrepresented gender who participated in program nontraditional for that gender	33%	16%	31%	31%
% of CTE students from underrepresented gender who completed a program nontraditional for that gender	16%	12%	29%	24%

Career Cluster Enrollment by Gender, FY 2013

Secondary (blue=female, red=male)

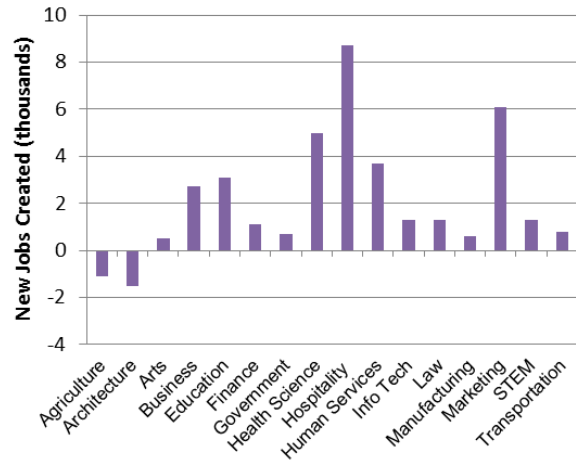


Postsecondary (blue=female, red=male)



Job Creation to 2018 by Career Cluster

The adjacent chart displays the expected number of jobs created (in thousands) in each of the 16 Career Clusters in Montana between 2008 and 2018, according to a report by Georgetown University.



Sources

ACTE, CTE State Profiles, <https://www.acteonline.org/stateprofiles/>
 Georgetown University, Career Clusters Report, <http://cew.georgetown.edu/clusters>
 NCES, Elementary/Secondary Education System, <http://nces.ed.gov/ccd/elsi/>, and College and Career Tables Library, Table 35d, <http://nces.ed.gov/datalab/tableslibrary/viewtable.aspx?tableid=8603>
 Perkins Collaborative Resource Network, Consolidated Annual Reports, <http://cte.ed.gov/accountability/reports.cfm>, and Perkins Allocations, <http://cte.ed.gov/perkinsimplementation/nrg.cfm>

State Contact

Kali Wicks, OCHE Perkins Coordinator
 Montana University System
 2500 Broadway, P. O. Box 203201
 Helena, MT 59620-3201
 Phone: (406) 444-0313; Email: kwicks@montana.edu