

MINNESOTA

Career Technical Education (CTE) Profile

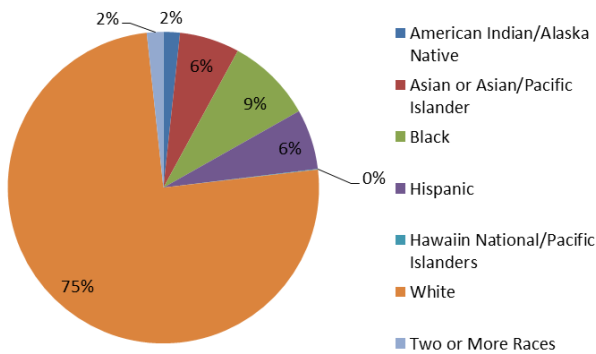


NAPE
National Alliance for
Partnerships in Equity
Education Foundation

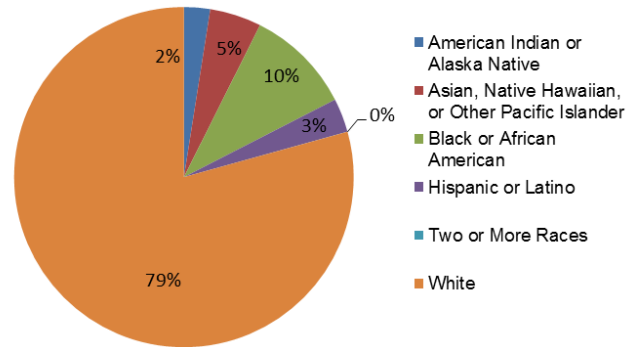
At the secondary level, CTE is delivered through comprehensive high schools, cooperatives, and centers. At the postsecondary level, CTE is delivered through technical and community colleges. Local eligible recipients of Perkins funds are required to belong to a regional consortium of secondary schools and postsecondary colleges that engages in joint planning and administration of Perkins activities on behalf of its members.

Enrollment (most recent data available by state is reported)

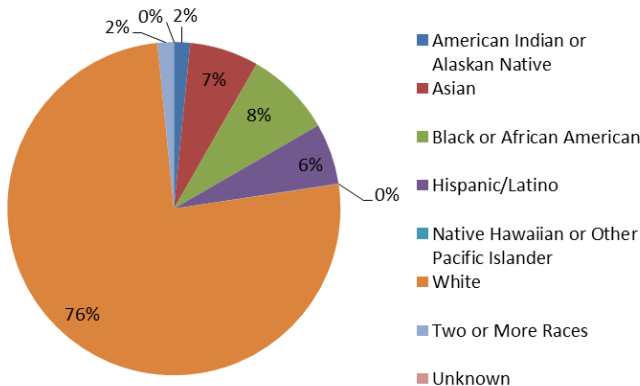
All Secondary Enrollment by Race, FY 2012



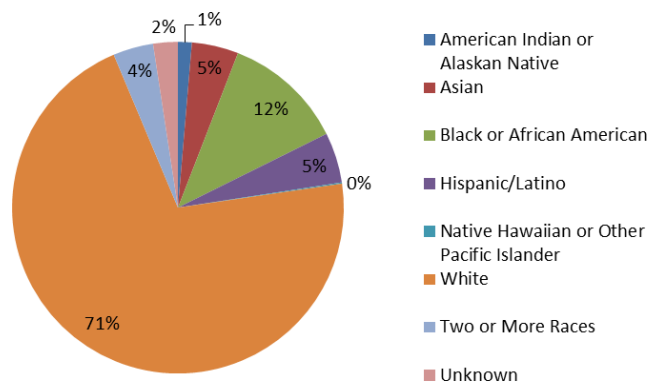
2-Year Postsecondary Enrollment by Race, Fall 2009



CTE Secondary Enrollment by Race, FY 2013



CTE Postsecondary Enrollment by Race, FY 2013



In FY 2013, 92,131 secondary and 65,486 postsecondary students participated in CTE. At the secondary level, 44% were female and 56% were male. At the postsecondary level, 51% were female and 49% were male.

Perkins Funding

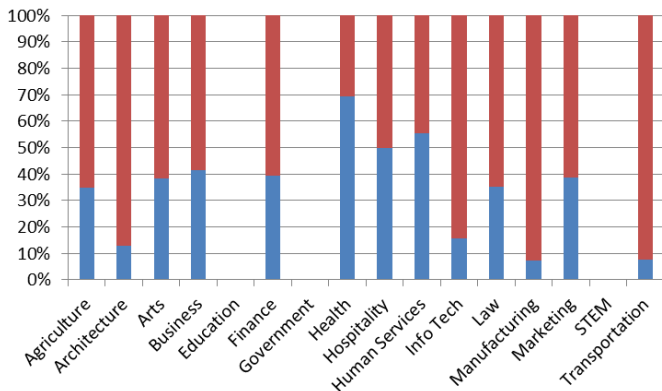
For FY 2014, Minnesota's Perkins state grant allocation was \$16,684,637, which was the same as FY 2013 and FY 2012. Of funds distributed to local recipients, 42% and 58% have traditionally been distributed to secondary and postsecondary programs, respectively.

Performance Data for CTE Concentrators, FY 2013

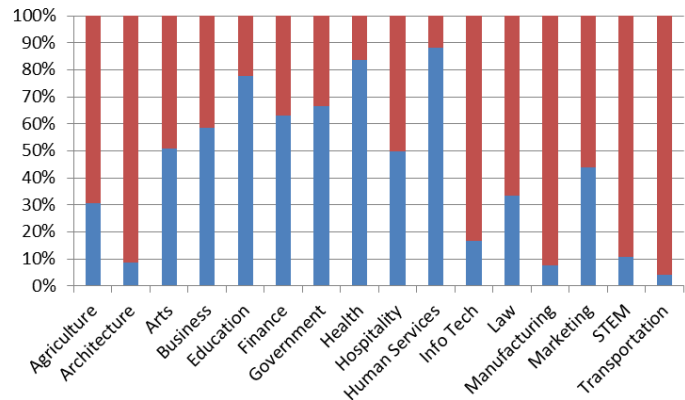
	Secondary		Postsecondary	
% passed the technical skill assessments aligned with industry standards	55%		83%	
% received an industry-recognized credential, certificate, or degree	88%		46%	
% placed or retained in postsecondary education, employment, military service, or advanced training	100%		85%	
	Male	Female	Male	Female
% of CTE students from underrepresented gender who participated in program nontraditional for that gender	45%	22%	15%	23%
% of CTE students from underrepresented gender who completed a program nontraditional for that gender	22%	11%	12%	15%

Career Cluster Enrollment by Gender, FY 2013

Secondary (blue=female, red=male)

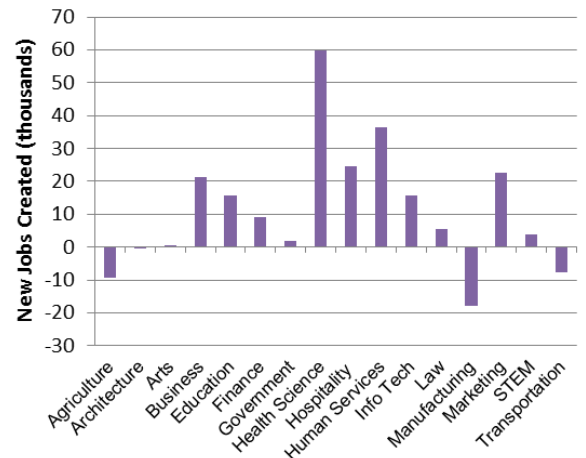


Postsecondary (blue=female, red=male)



Job Creation to 2018 by Career Cluster

The adjacent chart displays the expected number of jobs created (in thousands) in each of the 16 Career Clusters in Minnesota between 2008 and 2018, according to a report by Georgetown University.



Sources

ACTE, CTE State Profiles, <https://www.acteonline.org/stateprofiles/>
 Georgetown University, Career Clusters Report,
<http://cew.georgetown.edu/clusters>

NCES, Elementary/Secondary Education System,
<http://nces.ed.gov/ccd/elsi/>, and College and Career Tables Library,
 Table 35d,

<http://nces.ed.gov/datalab/tableslibrary/viewtable.aspx?tableid=8603>

Perkins Collaborative Resource Network, Consolidated Annual Reports, <http://cte.ed.gov/accountability/reports.cfm>, and
 Perkins Allocations, <http://cte.ed.gov/perkinsimplementation/nrg.cfm>

State Contact

Secondary

Al Hauge, Career Development Work Based Learning
 Minnesota Department of Education
 1500 Highway 36 West, Roseville, MN 55113
 651-582-8409; al.hauge@state.mn.us

Postsecondary

Eva Scates-Winston, Equity & Collaboration Specialist
 Minnesota State Colleges and Universities
 Wells Fargo Place, 30 7th St.E., Suite 350
 St. Paul, MN 55101-7804
 (651) 297-3792; eva.scates-winston@so.mnscu.edu