

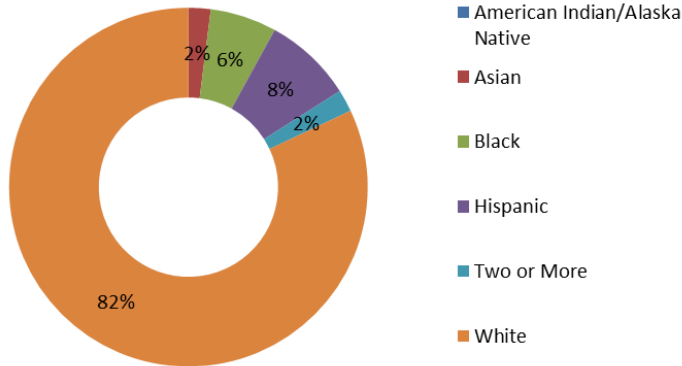
# MASSACHUSETTS

## Career Technical Education (CTE) Profile



**NAPE**  
National Alliance for  
Partnerships in Equity  
Education Foundation

### General Population (2014)<sup>1</sup>



### Fast Facts

Wisconsin is expected to become a majority-minority state after 2060.<sup>2</sup>

30% of working families are low income.<sup>3</sup>

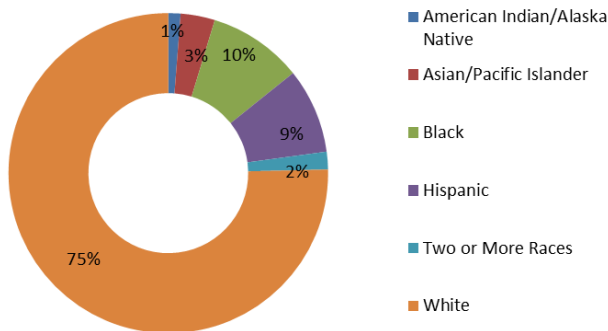
55% of minority working families are low income.<sup>3</sup>

43% of low-income working families are headed by a woman.<sup>4</sup>

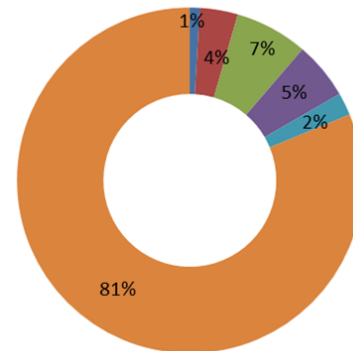
Median Hourly Wages <sup>5</sup>	Male	Female
White	\$22	\$17
Black	\$17	\$15
Latino	\$14	\$13
Asian	\$21	\$16
Native American	\$18	\$15

### General Student Population

*Secondary Enrollment, FY 2014<sup>6</sup>*



*4-Year Postsecondary Enrollment, Fall 2013<sup>7</sup>*



### Career and Technical Education

Secondary CTE is delivered through comprehensive high schools, regional vocational-technical high schools, regional academic schools, county agricultural schools, independent vocational and agricultural schools, and educational collaboratives. At the postsecondary level, Massachusetts Community Colleges offer open access to high-quality, affordable academic programs, including associate's degree and certificate programs. The Massachusetts Department of Elementary and Secondary Education is the eligible agency for Perkins funding.<sup>8</sup>

#### State CTE Contact

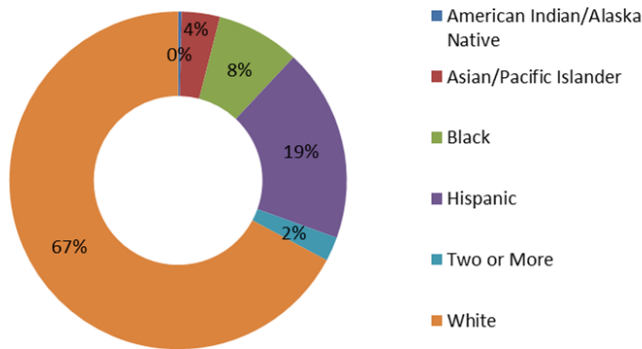
Marnie Jain, Education Specialist, Massachusetts Department of Elementary and Secondary Education, 75 Pleasant Street, Malden, MA 02148-4906, (781) 338-3908, mjain@doe.mass.edu

National Alliance for Partnerships in Equity

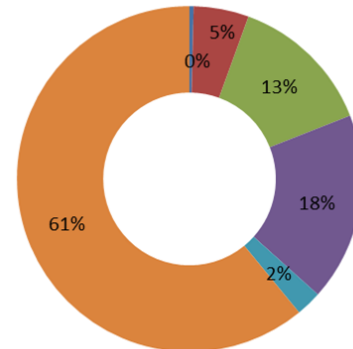
91 Newport Pike, Suite 302, Gap, PA 17527 | 717.407.5118 | www.napequity.org

In FY 2014, 32% of secondary and 38% of postsecondary students enrolled in CTE were economically disadvantaged.<sup>9</sup>

Secondary CTE Enrollment, FY 2014<sup>9</sup>



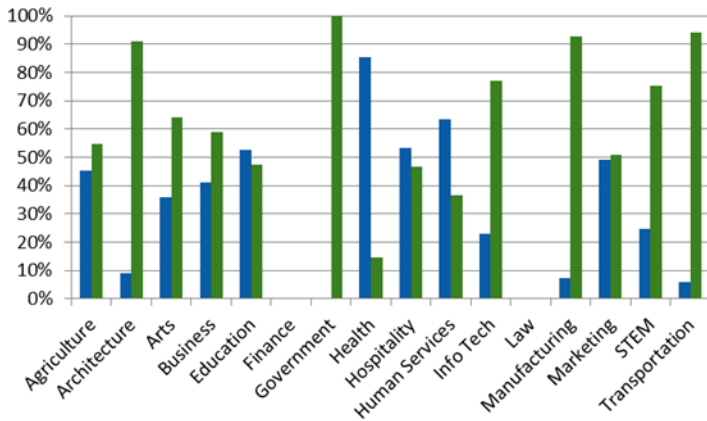
Postsecondary CTE Enrollment, FY 2014<sup>9</sup>



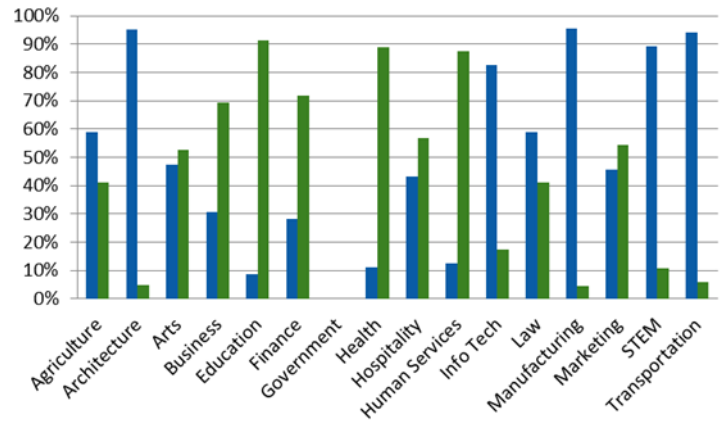
## Career Clusters

Seven of the 16 career clusters in CTE lead to many high-skill, high-wage, and high-demand STEM related careers. These include: Agriculture, Architecture, Health, Information Technology, Manufacturing, STEM, and Transportation, Distribution, and Logistics. These career clusters contain programs that prepare students for nontraditional careers.

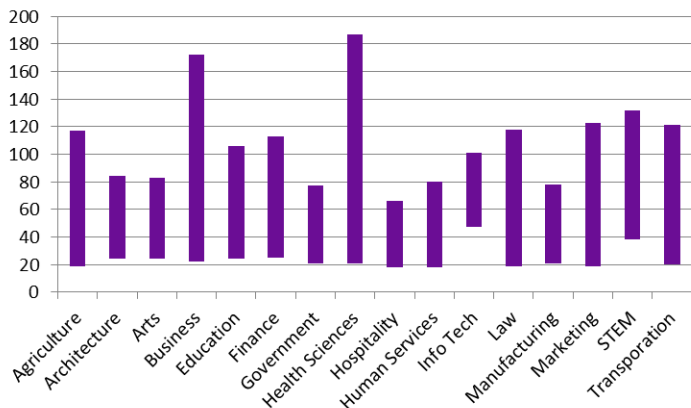
Secondary Enrollment, FY 2014<sup>9</sup>  
(blue = female, green = male)



Postsecondary Enrollment, FY 2014<sup>9</sup>  
(blue = female, green = male)



Median Salary Range (national, \$000)<sup>10</sup>



Fact Sheet Sources

- <http://www.census.gov/quickfacts/table/RHI225214/01>
- <https://cdn.americanprogress.org/wp-content/uploads/2015/02/SOC-report1.pdf>
- <http://www.workingpoorfamilies.org/indicators/>
- [http://www.workingpoorfamilies.org/wp-content/uploads/2014/02/WPFP\\_Low-Income-Working-Mothers-Report\\_021214.pdf](http://www.workingpoorfamilies.org/wp-content/uploads/2014/02/WPFP_Low-Income-Working-Mothers-Report_021214.pdf)
- <http://nationalequityatlas.org/data-summaries>
- <http://nces.ed.gov/ccd/elsi/tableGenerator.aspx>
- [http://nces.ed.gov/programs/digest/d14/tables/dt14\\_306.60.asp](http://nces.ed.gov/programs/digest/d14/tables/dt14_306.60.asp)
- <https://www.acteonline.org/stateprofiles/>
- <https://perkins.ed.gov/pims/DataExplorer> (race not available for clusters)
- <http://www.bls.gov/careeroutlook/2015/article/career-clusters.htm>