

MAINE

Career Technical Education (CTE) Profile



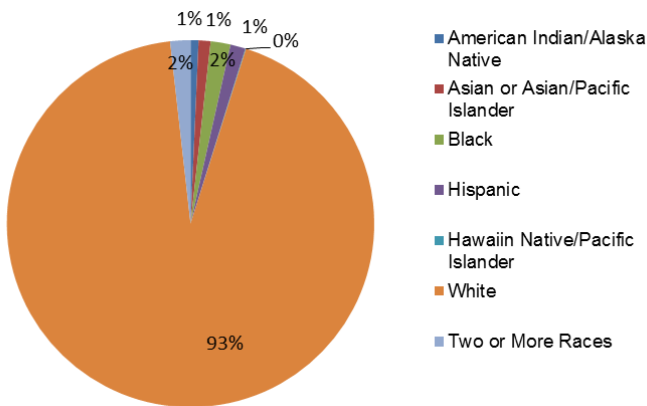
NAPE
National Alliance for
Partnerships in Equity
Education Foundation

At the secondary level, CTE is delivered through 27 area CTE regions or centers, 1 K-12 school, and a science and math magnet school. At the postsecondary level, CTE is delivered by the community college system as well as the Maritime Academy. The State Board of Education is the eligible agency for Perkins funding.

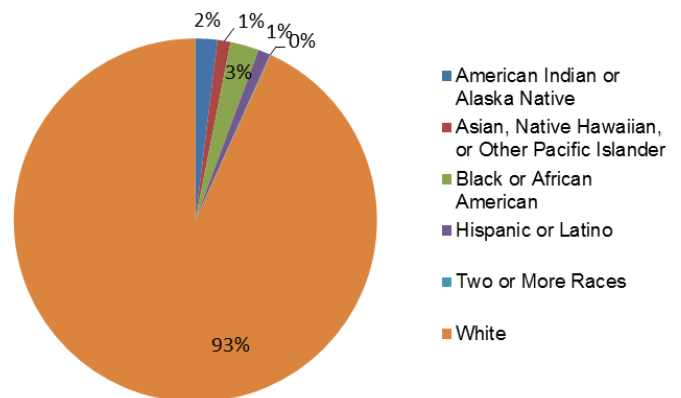
Enrollment

In FY 2012, 8,341 secondary and 8,787 postsecondary students participated in CTE. At the secondary level, 38% were female and 62% were male. At the postsecondary level, 49% were female and 51% were male.

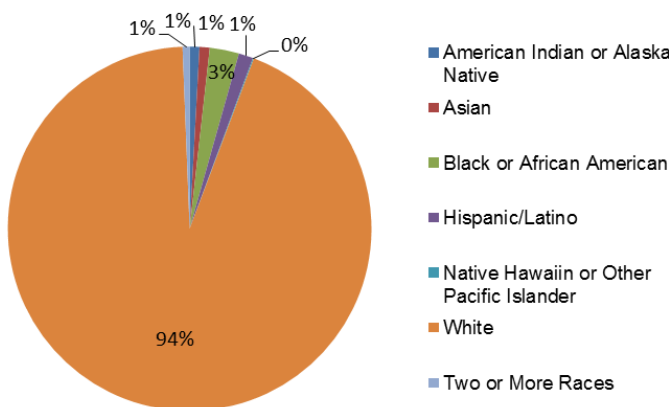
All Secondary Enrollment by Race, FY 2011



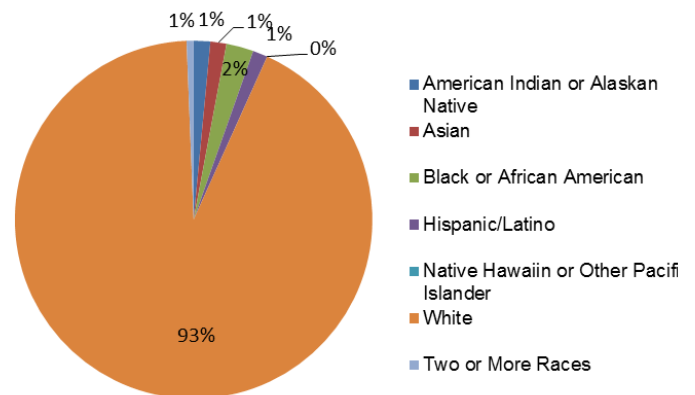
2-Year Postsecondary Enrollment by Race, Fall 2009



CTE Secondary Enrollment by Race, FY 2012



CTE Postsecondary Enrollment by Race, FY 2012



Perkins Funding

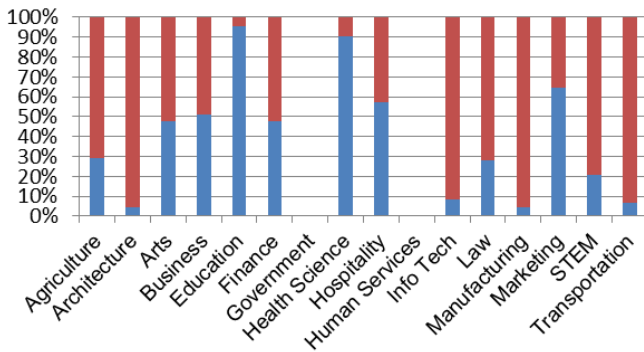
For FY 2014, Maine's Perkins state grant allocation is estimated to be \$5,496,906, which is \$261,431 more than FY 2013 and \$26,718 less than FY 2012. Based on past years, of funds distributed to local recipients, 50% and 50% are expected to be distributed to secondary and postsecondary programs, respectively.

Performance Data for CTE Concentrators, FY 2012

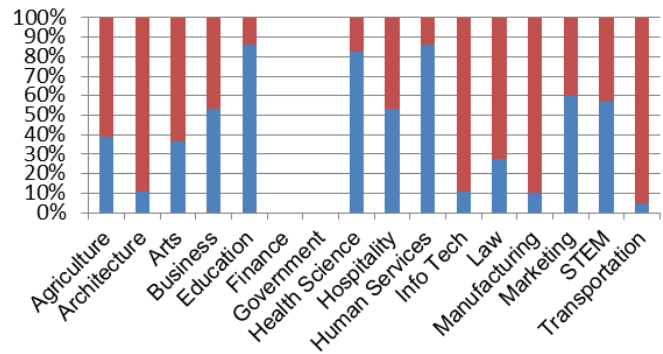
	Secondary		Postsecondary	
% passed the technical skill assessments aligned with industry standards	90%		95%	
% received an industry-recognized credential, certificate, or degree	88%		56%	
% placed or retained in postsecondary education, employment, military service, or advanced training	98%		89%	
	<i>Male</i>	<i>Female</i>	<i>Male</i>	<i>Female</i>
% of CTE students from underrepresented gender who participated in program nontraditional for that gender	29%	21%	11%	28%
% of CTE students from underrepresented gender who completed a program nontraditional for that gender	31%	20%	9%	22%

Career Cluster Enrollment by Gender

Secondary (blue=female, red=male)

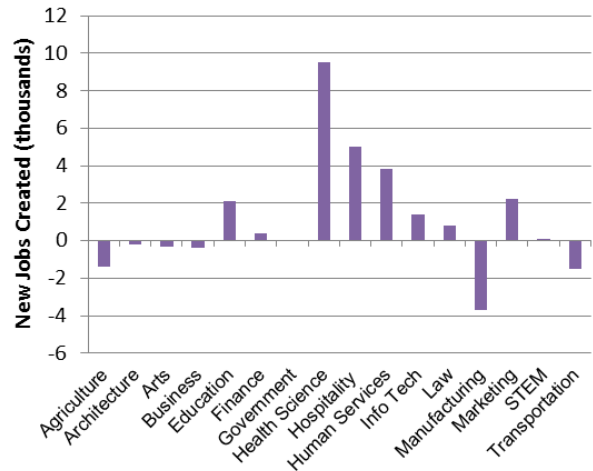


Postsecondary (blue=female, red=male)



Job Creation to 2018 by Career Cluster

The adjacent chart displays the expected number of jobs created (in thousands) in each of the 16 Career Clusters in Maine between 2008 and 2018, according to a report by Georgetown University.



Sources

ACTE, CTE State Profiles, <https://www.acteonline.org/stateprofiles/>
 Georgetown University, Career Clusters Report, <http://cew.georgetown.edu/clusters>
 NCES, Elementary/Secondary Education System, <http://nces.ed.gov/ccd/elsi/>, and College and Career Tables Library, Table 35d, <http://nces.ed.gov/datalab/tableslibrary/viewtable.aspx?tableid=8603>
 Perkins Collaborative Resource Network, Consolidated Annual Reports, <http://cte.ed.gov/accountability/reports.cfm>, and Perkins Allocations, <http://cte.ed.gov/perkinsimplementation/nrg.cfm>

State Contact

Dwight A. Littlefield, Education Consultant
 Maine Department of Education
 23 State House Station, Augusta, ME 04333
 Phone: (207) 624-6721;
 Email: Dwight.a.littlefield@maine.gov