

# ILLINOIS

## Career Technical Education (CTE) Profile



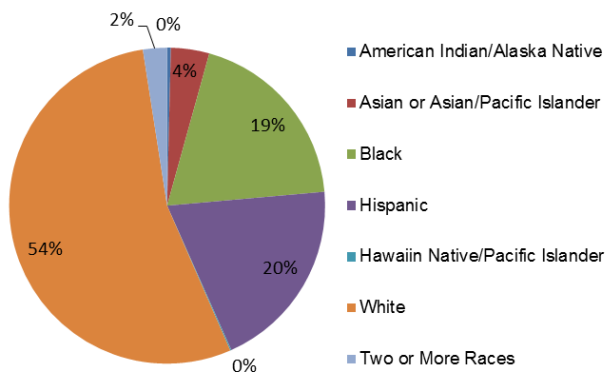
**NAPE**  
National Alliance for  
Partnerships in Equity  
Education Foundation

At the secondary level, CTE is delivered through comprehensive high schools and area career centers. At the postsecondary level, CTE is delivered through community college districts. The Illinois State Board of Education serves as the eligible agency for Perkins funding.

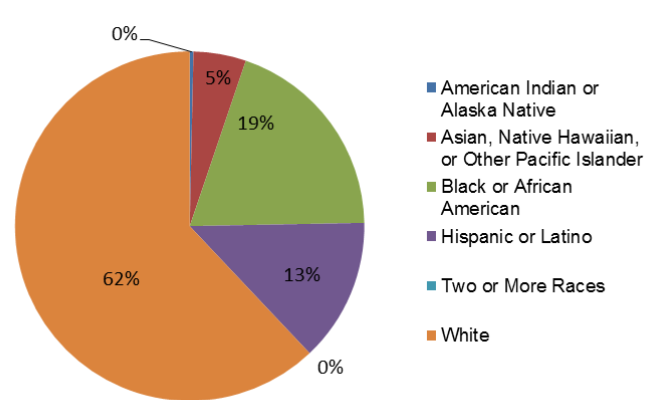
### Enrollment

In FY 2012, 300,983 secondary and 196,584 postsecondary students participated in CTE. At the secondary level, 45% were female and 55% were male. At the postsecondary level, 50% were female and 50% were male.

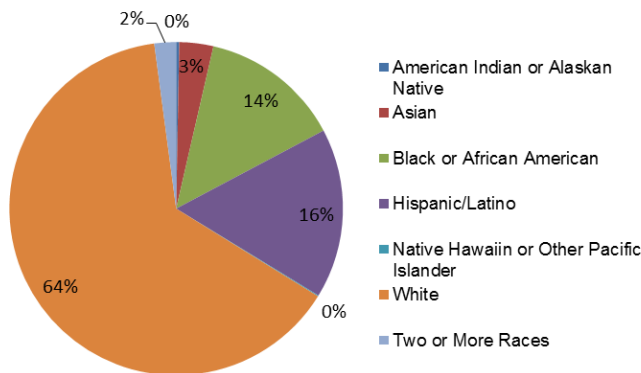
*All Secondary Enrollment by Race, FY 2011*



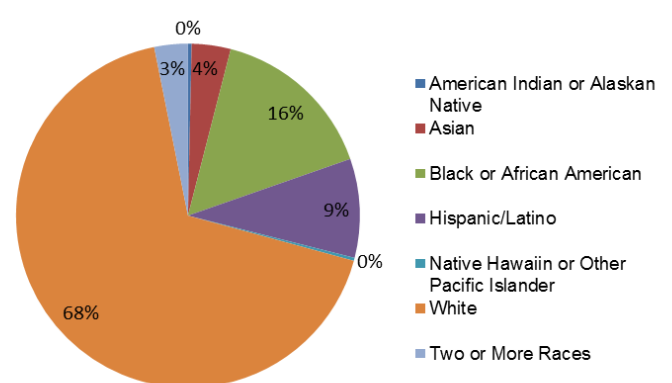
*2-Year Postsecondary Enrollment by Race, Fall 2009*



*CTE Secondary Enrollment by Race, FY 2012*



*CTE Postsecondary Enrollment by Race, FY 2012*



### Perkins Funding

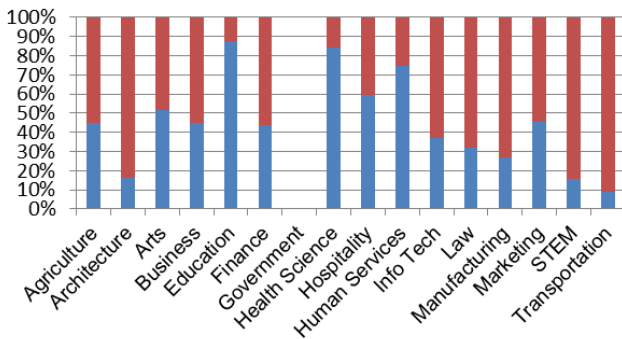
For FY 2014, Illinois's Perkins state grant allocation is estimated to be \$40,519,069, which is \$1,584,895 more than FY 2013 and \$405,549 less than FY 2012. Based on past years, of funds distributed to local recipients, 60% and 40% are expected to be distributed to secondary and postsecondary programs, respectively.

## Performance Data for CTE Concentrators, FY 2012

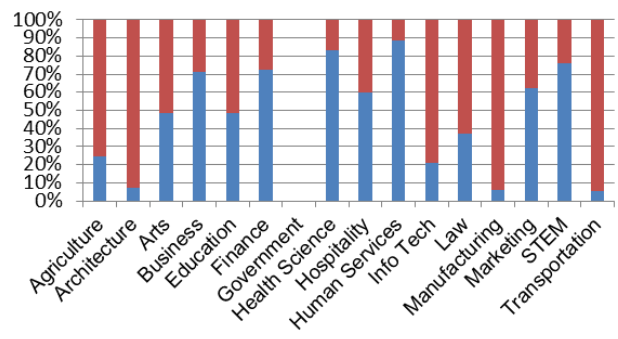
	Secondary		Postsecondary	
% passed the technical skill assessments aligned with industry standards	15%		77%	
% received an industry-recognized credential, certificate, or degree	94%		60%	
% placed or retained in postsecondary education, employment, military service, or advanced training	56%		67%	
	Male	Female	Male	Female
% of CTE students from underrepresented gender who participated in program nontraditional for that gender	41%	29%	16%	22%
% of CTE students from underrepresented gender who completed a program nontraditional for that gender	33%	33%	15%	16%

## Career Cluster Enrollment by Gender

Secondary (blue=female, red=male)

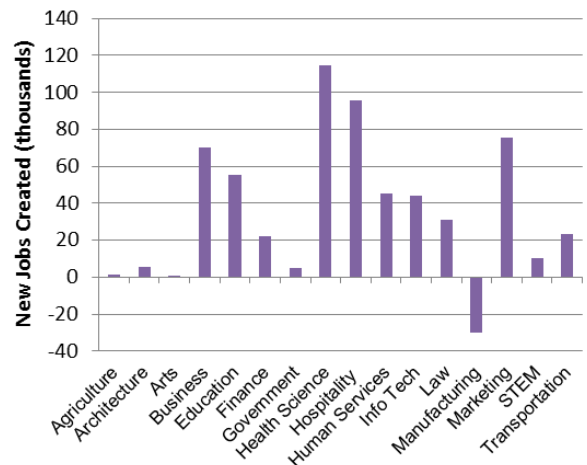


Postsecondary (blue=female, red=male)



## Job Creation to 2018 by Career Cluster

The adjacent chart displays the expected number of jobs created (in thousands) in each of the 16 Career Clusters in Illinois between 2008 and 2018, according to a report by Georgetown University.



## Sources

ACTE, CTE State Profiles, <https://www.acteonline.org/stateprofiles/>  
 Georgetown University, Career Clusters Report, <http://cew.georgetown.edu/clusters>  
 NCES, Elementary/Secondary Education System, <http://nces.ed.gov/ccd/elsi/>, and College and Career Tables Library, Table 35d, <http://nces.ed.gov/datalab/tableslibrary/viewtable.aspx?tableid=8603>  
 Perkins Collaborative Resource Network, Consolidated Annual Reports, <http://cte.ed.gov/accountability/reports.cfm>, and Perkins Allocations, <http://cte.ed.gov/perkinsimplementation/nrg.cfm>

## State Contact

### Secondary

Debbie Hopper, Principal Education Consultant  
 Illinois State Board of Education  
 100 North First St., E-240  
 Springfield, IL 62777-0001  
 Phone: (217) 782-4620; Email: [dhopper@isbe.net](mailto:dhopper@isbe.net)

### Postsecondary NAPE Contact

Brian Durham  
 Senior Director for Academic Affairs/CTE, ICCB  
 401 E. Capitol Avenue, Springfield, IL 62703  
 Phone: (217) 524-5502; Email: [brian.durham@illinois.gov](mailto:brian.durham@illinois.gov)