

FLORIDA

Career Technical Education (CTE) Profile



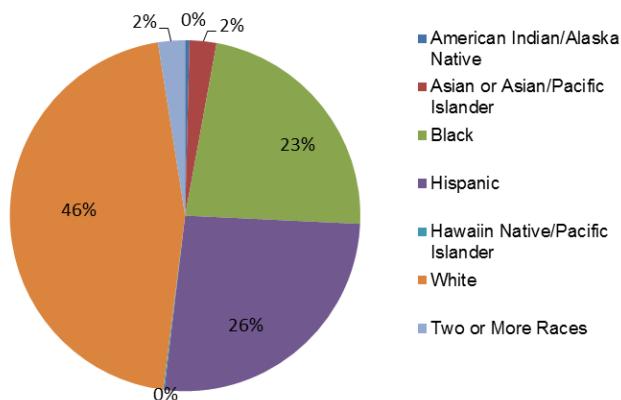
NAPE
National Alliance for
Partnerships in Equity
Education Foundation

Secondary CTE is delivered through comprehensive high schools, area vocational-technical centers, and University Developmental Research Schools. Postsecondary CTE is delivered through area vocational-technical centers, postsecondary technical centers, community colleges, and public and private universities and colleges. The Division of Workforce Education is the fiscal agent for Perkins funds.

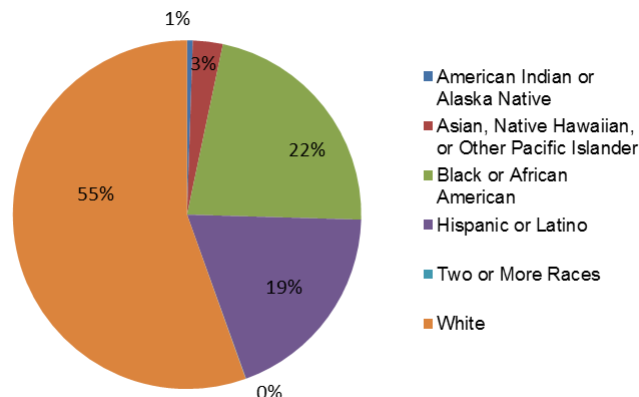
Enrollment

In FY 2012, 341,758 secondary and 104,726 postsecondary students participated in CTE. At the secondary level, 48% were female and 52% were male. At the postsecondary level, 56% were female and 44% were male.

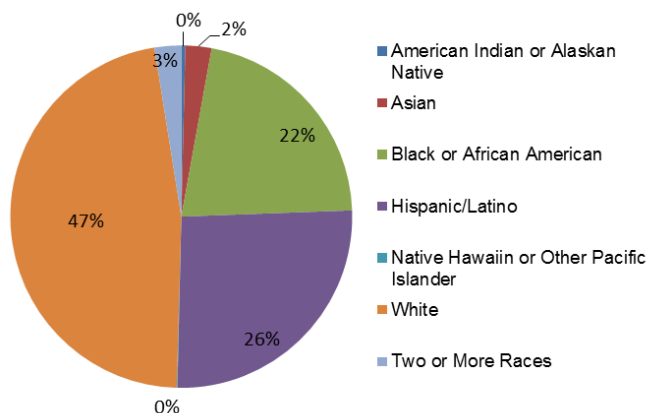
All Secondary Enrollment by Race, FY 2011



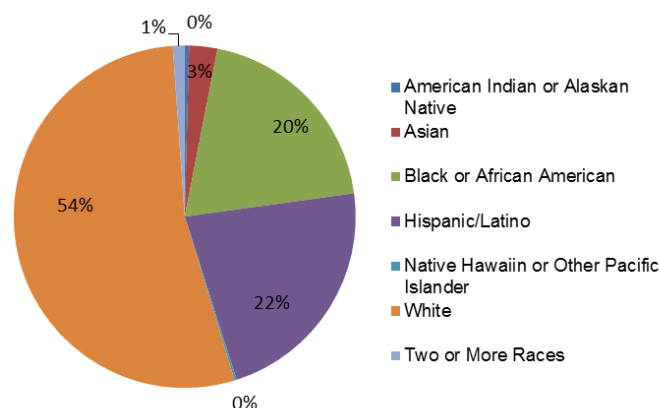
2-Year Postsecondary Enrollment by Race, Fall 2009



CTE Secondary Enrollment by Race, FY 2012



CTE Postsecondary Enrollment by Race, FY 2012



Perkins Funding

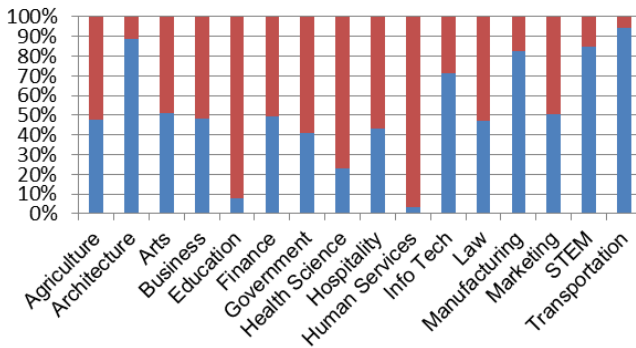
For FY 2014, Florida's Perkins state grant allocation is estimated to be \$61,726,876, which is \$5,663,412 more than FY 2013 and \$353,244 more than FY 2012. Based on past years, of funds distributed to local recipients, 51% and 49% are expected to be distributed to secondary and postsecondary programs, respectively.

Performance Data for CTE Concentrators, FY 2012

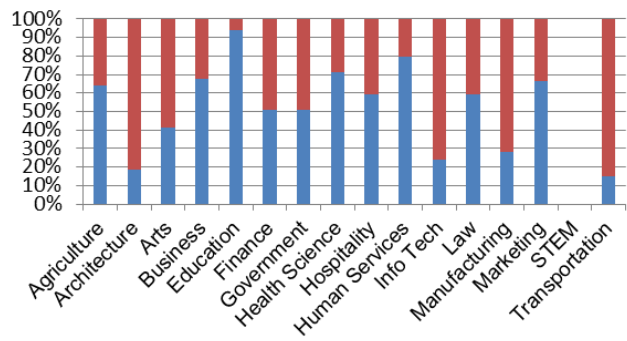
	Secondary		Postsecondary	
% passed the technical skill assessments aligned with industry standards	86%		44%	
% received an industry-recognized credential, certificate, or degree	92%		48%	
% placed or retained in postsecondary education, employment, military service, or advanced training	80%		86%	
	Male	Female	Male	Female
% of CTE students from underrepresented gender who participated in program nontraditional for that gender	30%	43%	18%	39%
% of CTE students from underrepresented gender who completed a program nontraditional for that gender	92%	98%	17%	32%

Career Cluster Enrollment by Gender

Secondary (blue=female, red=male)

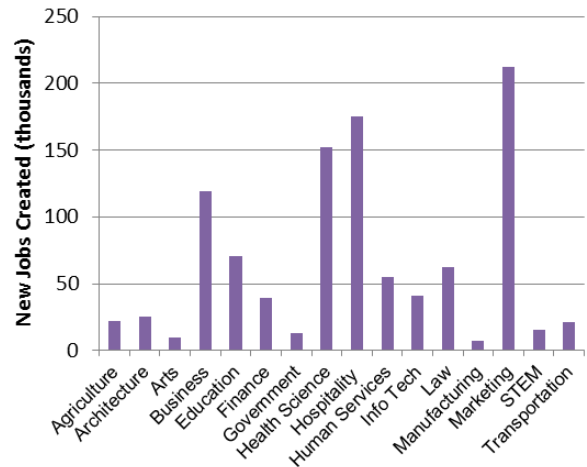


Postsecondary (blue=female, red=male)



Job Creation to 2018 by Career Cluster

The adjacent chart displays the expected number of jobs created (in thousands) in each of the 16 Career Clusters in Florida between 2008 and 2018, according to a report by Georgetown University.



Sources

ACTE, CTE State Profiles, <https://www.acteonline.org/stateprofiles/>
 Georgetown University, Career Clusters Report, <http://cew.georgetown.edu/clusters>
 NCES, Elementary/Secondary Education System, <http://nces.ed.gov/ccd/elsi/>, and College and Career Tables Library, Table 35d, <http://nces.ed.gov/datalab/tableslibrary/viewtable.aspx?tableid=8603>
 Perkins Collaborative Resource Network, Consolidated Annual Reports, <http://cte.ed.gov/accountability/reports.cfm>, and Perkins Allocations, <http://cte.ed.gov/perkinsimplementation/nrg.cfm>

State Contact

Jane Silveria, State Supervisor
 Florida Department of Education
 325 W. Gaines St., Rm. 701
 Tallahassee, FL 32399-0400
 Phone: (850) 245-9022; Email: Jane.Silveria@fldoe.org