

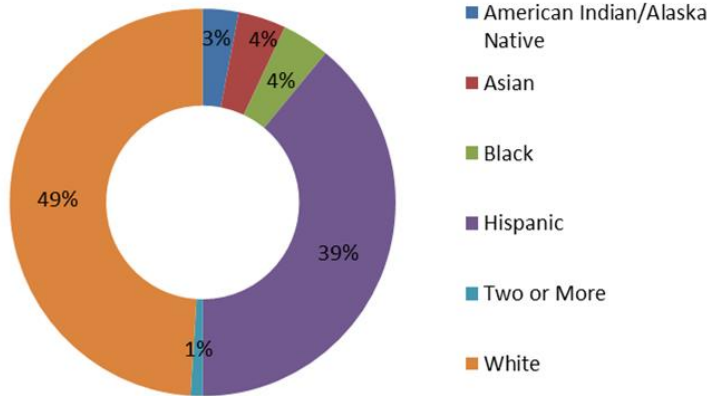
# ARIZONA

## Career Technical Education (CTE) Profile



**NAPE**  
National Alliance for  
Partnerships in Equity  
Education Foundation

### General Population (2014)<sup>1</sup>



### Fast Facts

Arizona is expected to become a majority-minority state in 2012.<sup>2</sup>

39% of working families are low income.<sup>3</sup>

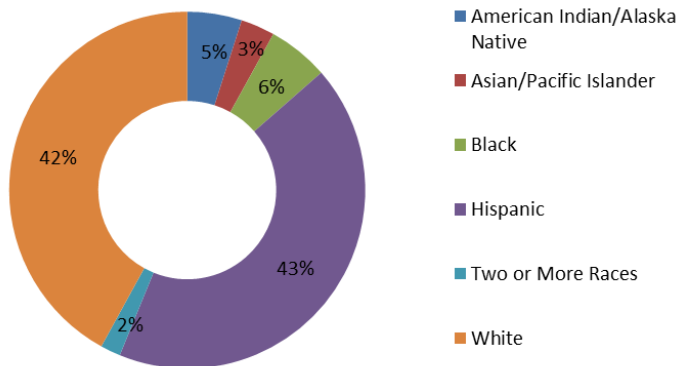
52% of minority working families are low income.<sup>3</sup>

34% of low-income working families are headed by a woman.<sup>4</sup>

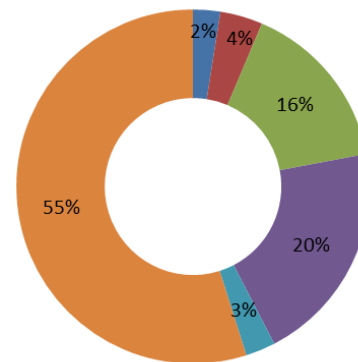
Median Hourly Wages <sup>5</sup>	Male	Female
White	\$24	\$19
Black	\$19	\$17
Latino	\$15	\$14
Asian	\$25	\$18
Native American	\$16	\$14

### General Student Population

Secondary Enrollment, FY 2014<sup>6</sup>



4-Year Postsecondary Enrollment, Fall 2013<sup>7</sup>



### Career and Technical Education

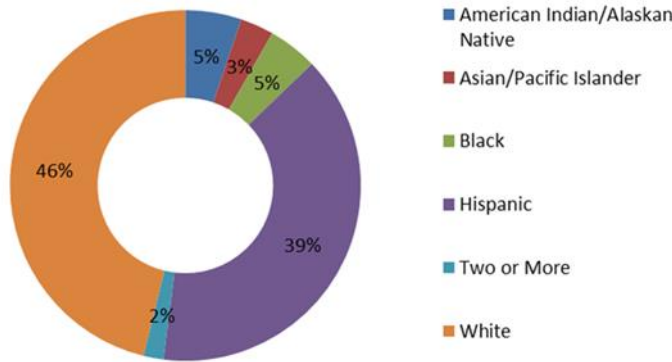
At the secondary level, CTE is delivered through comprehensive high schools or through the 13 Joint Technology Education Districts, which include more than 130 sites. At the postsecondary level, CTE is delivered through 10 community college districts and through private technical colleges.<sup>8</sup>

#### State CTE Contact

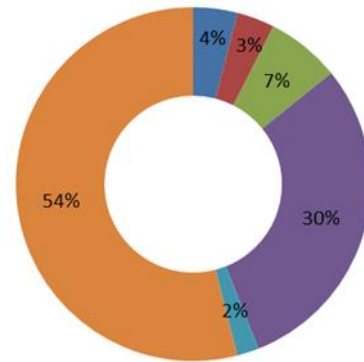
Jeanne Roberts, Education Program Specialist, Arizona Department of Education, 1535 W. Jefferson St., Bin #60, Phoenix, AZ 85007, (602) 364-2211, Jeanne.Roberts@azed.gov

In FY 2014, 40% of secondary and 38% of postsecondary students enrolled in CTE were economically disadvantaged.<sup>9</sup>

Secondary CTE Enrollment, FY 2014<sup>9</sup>



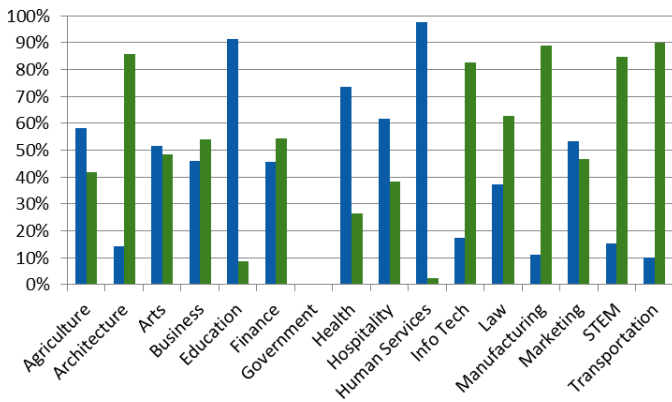
Postsecondary CTE Enrollment, FY 2014<sup>9</sup>



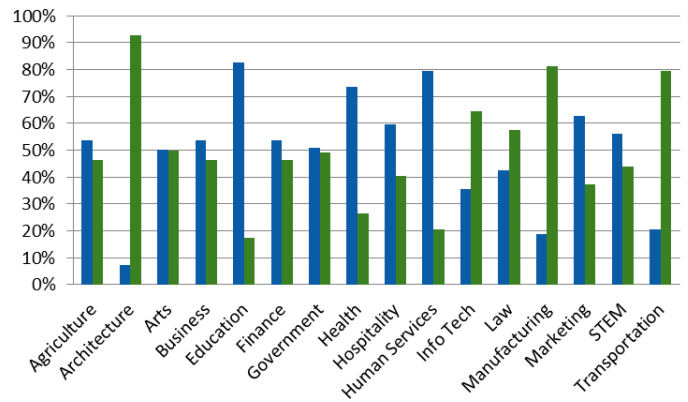
## Career Clusters

Seven of the 16 career clusters in CTE lead to many high-skill, high-wage, and high-demand STEM related careers. These include: Agriculture, Architecture, Health, Information Technology, Manufacturing, STEM, and Transportation, Distribution, and Logistics. These career clusters contain programs that prepare students for nontraditional careers.

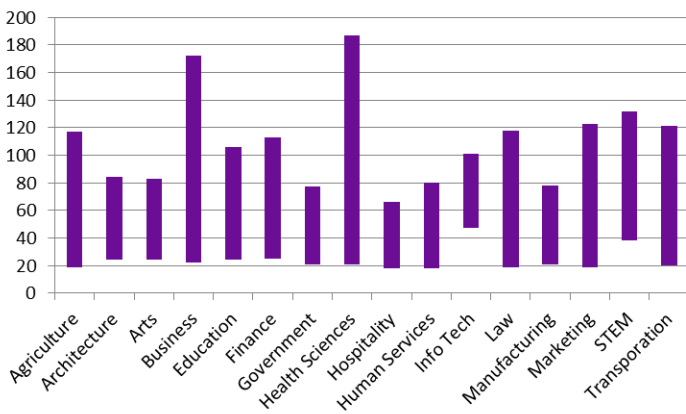
Secondary Enrollment, FY 2014<sup>9</sup>  
(blue = female, green = male)



Postsecondary Enrollment, FY 2014<sup>9</sup>  
(blue = female, green = male)



Median Salary Range (national, \$000)<sup>10</sup>



## Fact Sheet Sources

- <http://www.census.gov/quickfacts/table/RHI225214/01>
- <https://cdn.americanprogress.org/wp-content/uploads/2015/02/SOC-report1.pdf>
- <http://www.workingpoorfamilies.org/indicators/>
- [http://www.workingpoorfamilies.org/wp-content/uploads/2014/02/WFPF\\_Low-Income-Working-Mothers-Report\\_021214.pdf](http://www.workingpoorfamilies.org/wp-content/uploads/2014/02/WFPF_Low-Income-Working-Mothers-Report_021214.pdf)
- <http://nationalequityatlas.org/data-summaries>
- <http://nces.ed.gov/ccd/elsi/tableGenerator.aspx>
- [http://nces.ed.gov/programs/digest/d14/tables/dt14\\_306.60.asp](http://nces.ed.gov/programs/digest/d14/tables/dt14_306.60.asp)
- <https://www.actonline.org/stateprofiles/>
- <https://perkins.ed.gov/pims/DataExplorer> (race not available for clusters)
- <http://www.bls.gov/careeroutlook/2015/article/career-clusters.htm>